

TOWN
Rotary celebrates 50 years
Page 11

SPORTS
Teams make summer playoffs
Page 15

Dedicated to Improving the Quality of Life in the Communities We Serve

A TURLEY PUBLICATION | www.turley.com

AUGUST 1, 2024

www.wilbrahamhampdentimes.turley.com

Conservation Comm. unanimously rejects 530 Glendale Road Solar Project

Applicant withdraws plans one week later

By Kristin Rivers
Editor
krivers@turley.com



Turley photos by Kristin Rivers

Planning Board Associate Member Joe Sibilia asks procedural questions ahead of the vote to approve the withdrawal of the 530 Glendale Road Solar Project application on July 24. The decision came one week after the Conservation Commission rejected the project on July 17.

HAMPDEN - The Conservation Commission unanimously voted to deny the 530 Glendale Road Solar Project on July 17.

The discussion was continued from the June 25 meeting.

The project originates from a special permit application from Glendale Road Development LLC to allow for the construction of a 4.92 megawatt-ac ground-mounted solar facility with energy storage and associated access driveways, with site grading and utilities located at the address.

Please see **SOLAR**, page 8



Turley photos by Kristin Rivers

A group photo of participants with Katie Krupka, senior care advisor at Assisted Living Locators, Barbara Harrington, social services director at Wilbraham Senior Center, for the Dementia Friend Training at Country Bank on Boston Road on July 24.

Dementia Friends training provides support, information to businesses and organizations

The training took place at Country Bank

By Kristin Rivers
Editor
krivers@turley.com

WILBRAHAM - Local businesses and organizations gathered at Country Bank on Boston Road on July 24 for a Dementia Friends training.

The training, led by Katie Krupka, certified senior advisor at Assisted Living Locators, and Barbara Harrington, social services coordi-

nator at the senior center, provided attendees with information and tips on supporting residents living with dementia and their caregivers and families.

The training is part of Wilbraham's dementia-friendly initiative, launched in September 2023 at the Country Club of Wilbraham.

Tracey Perry, assistant vice president and retail banking officer at Country Bank, is also a member of the Dementia Friendly Wilbraham Committee, explaining Paula Dubord, director of elder affairs, told her last August about the initiative.

"As a local bank, being involved

in the community is vital to us. I was very interested in taking part as I have a personal connection to those living with dementia, having experienced it with my grandmother," Perry said. "This personal experience has given me a deep understanding of the impact on caregivers and a strong desire to make a difference. I want to best serve my customers and their caregivers by providing personalized service and an exceptional banking experience."

Perry said participating in--and

Please see **DEMENZA**, page 7

Kids and teens get artsy at Paint, Sip, Fun

By Noelle Hisgen
Correspondent

HAMPDEN - On July 25, the library hosted their annual Paint, Sip, Fun class as part of their Summer Reading program.

Paint, Sip, Fun is a traveling art studio founded by Erin Leigh Boughamer in 2013 with the vision to educate, empower and inspire everyone to connect with their creative side. Their mission is to help their clients to find the inner artist that they believe lives in everyone and while striving to create an inclusive and supportive environment for all artists.

They are the most experienced "Paint and Sip" company in the western Massachusetts and northern Connecticut area.

The sessions held at the library was for 30 children in kindergarten to fourth grade, then a

teen group later in the day. The children's group painted an adorable puppy, while the teen group painted a night campfire scene.

The classes are led by Boughamer, who is more affectionately known as "Miss B" to the children. She teaches them about how to use each brush and their purpose, and the various uses of them.

Then, Boughamer directs the children in a step-by-step process on how to create the final product. During each step, Boughamer frequently moves around the room watching each child freely express themselves on the canvas.

Members of the library were able to witness this event occur as part of the summer reading program, including Ellen Moriarty, the director of the library.

"It's a big event, it's always



Photos courtesy of Hampden Free Public Library

The teens of Hampden Free Public Library's Paint Sip Fun class on July 25 hold their finished paintings.

a great turnout, the kids love it, and we try to do it as much as we can," Moriarty said. "We have had a great experience, the kids

are very enthusiastic about being creative. It's always a big hit and it's a full house usually, and it always impresses me how creative

the kids are and how their creativity always stands out in their individual artwork."

Along with the large group of children partaking in the painting activity, many parents were happily overseeing them.

One of the parents was Melanie Joy-Cooper, who came to Paint Sip Fun for her sons, Ethan and Owen.

"We just love doing all the library activities. It's a fun community way of engagement and a way to keep them busy over the summer," Joy-Cooper said.

All of the children that night were engaged with Boughamer, and were very excited as they pressed their paint brushes onto the canvases.

Boughamer shared why she enjoys doing Paint, Sip, Fun events.

Please see **HAMPDEN**, page 13

Water Customer Notice from the Water Department

Metallic-Tasting Algae in Reservoir

WILBRAHAM - Starting in mid-July, an algae bloom occurred in the Quabbin reservoir. While the presence of low levels of algae (naturally occurring microscopic plants) is a sign of a healthy reservoir, this particular bloom consists of Chryso-sphaerella algae, which leaves a metallic taste to tap water. While this algae bloom presents a nuisance taste and odor condition, the water remains safe to drink. In the meantime, chilling water in the refrigerator and/or adding lemon is the easiest way to improve the taste.

The bloom is being monitored by Department of Conservation and Recreation

(DCR) and MWRA three days per week. Staff are collecting samples in the reservoir, performing microscopic analyses, and identifying and counting the algae concentrations. MWRA is also communicating with each of the Chicopee Valley Aqueduct communities several times per week. In addition, water quality is monitored continuously with on-line analyzers immediately before and after treatment at the Brusch Water Treatment Facility, as well as further downstream.

This Chryso-sphaerella bloom occurred starting around July 17th. Chryso-sphaerella is a golden brown algae of the Chrysophyte family. For more information about Quabbin Reservoir and water quality is available at MWRA.com.

Here's Your Chance to be a BIG WINNER!

WILBRAHAM - Feeling Lucky? The Friends of Wilbraham Seniors have again kicked off their popular fundraiser held throughout last summer. Just imagine- YOU could win a whopping \$500 basket of MA. Lotto Scratch Tickets!!

Raffle tickets can be purchased at various times throughout July and August. Look for their fabulous Lotto Tower. So, drop by the new Senior Center, behind the Wilbraham Town Hall on

Springfield Street on Tuesday and Wednesdays between 9 a.m. to Noon or stop by the Farmers Market, in front of United Church on Main Street between open hours of 2 to 6 p.m. every Wednesday.

Tickets could also be printed from their website: friendsofwilbrahamseniors.org and mailed in with your check to:

Friends of Wilbraham Seniors, 40 Post Office Park, #747, Wilbraham, MA 01095 or just stick your envelope with filled out raffle tickets and payment into their drop box located in the front lobby near the reception desk and save yourself a stamp.

Ticket prices range from one for \$5.00, three for \$10, seven for \$20 or the best buy, 25 chances for \$50. Yes, a great way for family, friends, or co-workers to pitch in and share the winnings. All tickets need to be in by 8/24/24. The drawing will take place on the front patio of the Wilbraham Senior Center, at 3 p.m. You do not need to be present to win. Proceeds from this fundraiser will go towards new programs and services which can now be offered at new Wilbraham Senior Center.

Wilbraham Senior Center offering Memory Café every first Monday

The program occurs monthly

By Kristin Rivers
Editor
krivers@turley.com

WILBRAHAM - The senior center will begin offering a Memory Café program every first Monday of the month from 11 a.m. to 1 p.m.

A memory café is where participants come together in an informal social gathering to take part in activities to help retain--or possibly improve--memory skills and is especially helpful for those living with memory loss and their caregivers.

The gatherings also help prevent social isolation, form new friendships for participants, teach caregivers techniques to assist in their role, give caregivers a chance to have fun and stimulate happy memories through the creative arts and music.

Barbara Harrington, the senior center's social services coordinator, explained the importance of bringing awareness and providing a place for people who are struggling with dementia.

"(The) first hour, we're going to have some activities for the residents. Have people come in, one day we'll do crafts, one day we'll do like a picture day, another day we'll have, maybe, somebody from Forest Park come in with the animals," Harrington said. "A variety of things, but I want it to be a place where people with dementia feel comfortable and (for) their families."

Harrington hopes to, also, provide resources for caregivers, creating a support group and a space for people to breathe, get more information and ask questions.

She plans to do a survey to see what residents would like to see and is also connecting with Wendy Cowles, the outreach coordinator for the Hampden Senior Center, on what they do for their own Memory Café.

"I believe it's so important to get the word out and to have a place for residents with the illness and the caregivers to have a place. Just not to worry," Harrington said. "I want this to be a welcoming, comfortable setting for these people to come. I just think it's really important."

Harrington stressed everything in the

Memory Café would also be confidential. "Everything is confidential. When you come to our senior center, it's going to be a place like a group. It's like your own little club," Harrington said.

On the Memory Café's role in Wilbraham's Dementia Friendly Initiative, which launched in September 2023, Harrington said the biggest component is the awareness, adding how other programs including a virtual reality program that helps participants learn what it's like to live with dementia also help with awareness.

"Everybody knows somebody who's going through something like that," Harrington said. "The more information out there, the more experiences that you can feel that these individuals are going through, the better the awareness it spreads out there. Having Memory Cafés, having dementia-friendly programs or letting the businesses know really what's out there, it's just spreading the word. Spreading the word that there is support, there is information out there for them to learn what this is truly about."

Harrington expressed excitement at the senior center offering this program to the community and that there's more to what goes on at the senior center beyond bingo or Tai Chi.

"Programs like this are so important. Support, information about dementia, dementia talks, educating the people and it's all free. There's just so much more. We want the town to be involved and know that social services--what I do--is not just for seniors. It's for everybody," Harrington said. "We want people to know we are here. We are here to educate them, we are here--for me--to support them with anything that they need."

For the caregivers, Harrington stressed the importance of these programs providing support to them too.

"Having resources for the caregiver as well is important. To take care of themselves," Harrington said. "The programs I still want to offer for people in the daytime, but I also want to provide programs for the caregiver support in the evening. So, if they can get away and have the time to themselves as a support group, I think that's truly important."

Harrington wants the community to know the senior center is here to support them.

"Always welcome. No question is a silly question. We're here," Harrington said. "If you have questions, you can always call me at any time."

To learn more about Memory Café, call Harrington at 596-8379 to register.



2039 Boston Road, Wilbraham
 Open: Sun.-Wed. 11:30am-9pm
 Thurs.-Sat. 11:30am-10pm
 ~ BAR OPEN LATE ~
 413-279-1198 • thelocaltabletap.com



NEW! SUNDAY BRUNCH
 Every Sunday 10am-2pm
 A special brunch menu
 along with our regular menu items
 Bloody Marys • Mimosas • Peach Bellinis



MONDAY NIGHT SPECIAL
Burger & Beer \$15
 Smash Burger, Fries, and choice of 16 oz. Stella or Bud Light



TUESDAY NIGHT SPECIAL 10 oz. Sirloin Steak \$20
 Served over roasted potatoes and grilled summer squash with mushroom demiglaze



THURSDAY ALL DAY SPECIAL
Steak & Steamers
 10 oz. Sirloin, Clams w/ Drawn Butter, Baked Potato & Corn
ONLY \$29



JOIN OUR REWARDS PROGRAM TODAY!
 Just click the widget on our site to join today - it's easy and free!
 Double Points Tuesday!
 thelocaltabletap.com

PARTIES & BANQUETS
 We can accommodate 25-90 people for your special event.

We Are Hiring! Apply online at thelocaltabletap.com/jobs

ROBERTS ROOFS

SPECIALIZING IN

Slate • Copper • Architectural Shingles • Gutters
 Historical Restoration • Flat Roofing
Snow Removal
Snow/Ice Damage Repair

Tel. 413-283-4395
 Cell 413-237-9434

www.RobertsRoofsInc.com



Trusted Name Since 1982

HAMPDEN SEPTIC

WE'RE STILL TAKING CARE OF BUSINESS!

Time To Get
Your Septic
Pumped,
Call To
Book Now!



WE ARE A LOCALLY OWNED AND OPERATED BUSINESS

Pumping • Installation • Title 5 Inspections • Perc Tests
 SEWER PUMP REPAIRS • FULLY INSURED • FAMILY OWNED

24/7 Emergency Service
 (413) 374-1322

566-2916

Board of Selectmen reviews Cable TV agreement

Concerns pertain to town responsibilities

EDITOR'S NOTE: Due to technical issues this week, we do not have a story on the July 29 Board of Selectmen meeting, but will for next week. Instead, we have a story on another topic from the July 15 meeting.

HAMPDEN - The Board of Selectmen reviewed the Cable TV Agreement on July 15, with questions and concerns raised about PEG access.

Town Administrator Brian Domina explained to the board there was an agreement from their attorney provided to them, explaining he hoped to discuss paragraph two, which pertains to town responsibilities.

"There's an assumption in the agreement that the town wants to pursue PEG access funding and it asks the town to create a budget, to create a PEG studio and operate the PEG system essentially," Domina said. "I guess my question is is that something that the board wants to pursue?"

Domina said in talking with the attorney, the attorney "made the point that a lot of time, in most cases, the need for the PEG Funding is what drives the request for the franchise fee."

"The franchise fee being different from the license fee, which is 50 cents per subscriber. The franchise fee--I'm still a little bit confused by this--I think it's a little bit different, but I know there was recent regulatory rulings that talked about the PEG access money or capital money was being taken off that 5%. There's a 5% cap on the franchises," Domina said. "But really, the question is is this something that we want to pursue in terms

of providing access channels? Because if it's not, then I think the cable negotiation is different. It looks different, right? It might just be renewing what we have or providing some other provisions in terms of cost control for maybe senior citizens or things like that."

When Chair Don Davenport brought up the PEG access being passed on to the homeowners--with Domina clarifying they have a right to do that--Selectman John Flynn explained how this was looked at seven or eight years ago.

"It was going to be a half percent on the cable bill and the three Selectmen could make that call at that time without any public input," Flynn said. "And we were against it because we felt it wasn't right to change the owner's cable bill without getting any input into it, and that's what was going to fund the studio, if you will, at that point."

Selectman Craig Rivest wondered if the original question was if community access channels for other towns were charging the same rates as Hampden without community access.

"So, if they are, does that mean they're going to increase the bill to be competitive? For what reason?" Rivest said.

Domina replied yes.

"The limited bills that we have in town and out of town, the customer charge was the same. There was one town--which the town I live in--there was a separate line item that talked about a PEG Access fee. But, the charges were the same," Domina said. "It was a little bit difficult to decipher because there was different rebates and promotions..."

"How does Wilbraham do it?"

Flynn said. "I mean, they have the public access. Is that funded from a cable surcharge?"

After Domina explained a former Cable Council was going to look at a bill from Wilbraham, Flynn said this.

"Cos I do notice--maybe it was Hatfield--they mentioned 'Oh, you can watch the meeting on Channel 191'--which I think is the same thing that you can watch the Wilbraham (Public Access)--so it seems to be a consistent thing with their public access. That 'these are the three channels we give you for as part of your PEG agreement,'" Flynn said.

After Flynn mentioned the IT side and how they could be doing a better job with YouTube and funding someone to oversee that, Rivest agreed on how funding internally rather than having a funding mechanism "that's out of our control" was the better route.

"I just don't like putting a surcharge on people without their input. That just bothers me," Flynn said.

"We could do it internally if we wanted to and with the input," Rivest added.

Returning to the agreement after Flynn asked if they're reviewing the agreement without paragraph two, Domina clarified he'd like to have a conversation with the attorney before the board signs it.

"If we're not going to consider PEG Access, if we're not going to pursue a franchise fee and see what that conversation is like," Domina said. "Because I think that makes it--the process--much simpler."

Domina later agreed to do a little more research and would follow up with the attorney and then report back to the board.

THE BEST FRESH LOCALLY GROWN!

Local Field Grown **TOMATOES**
Red, Ripe and Delicious!



Locally Grown **BUTTER & SUGAR SWEET CORN**
Sweet White Corn Too!

Locally Grown **BLUEBERRIES**
From Kosinski Farm, Westfield



Locally Grown
From Nearby Farms
Green Peppers, Eggplant,
Yellow & Green Squash,
Yellow & Green Beans,
Grape & Cherry Tomatoes & MORE!

PACK A PICNIC from RANDALL'S

Gourmet Sandwiches & Summer Salads
FRESH BAKED COOKIES, PIES & MUFFINS
Randall's Blueberry Sour Cream Pies

Perennial Of The Week "CONEFLOWER"

Echinacea One Gallon
\$9.99 Pots



Cheyenne Spirit, Green Twister,
Magnus and PowWow Wild Berry
Sun-Loving Hardy Perennial
Heat & Drought Tolerant



Native Field **FLOWERS IN MASON JARS**
One Pint Jar
\$17.99

LEMON SCENTED HERBS

Now \$5.99
2 for \$10
6" Size

Lemon Balm,
Lemon Verbena, Lemon Grass
Fresh Clean Fragrance
Natural Insect Repellent

Elsie's Creamery

The Best Homemade Ice Cream



MADE IN SMALL BATCHES
AT THE CREAMERY!

Shakes, Sundaes,
Floats & Soft Serve Too!

OPEN EVERY NIGHT UNTIL 9PM

ALWAYS FRESH AT



631 CENTER ST., Route 21, Mass Tpke Exit 54
LUDLOW • 589-7071 • www.randallsfarm.net

OPEN EVERY DAY 7AM - 8PM

Find us on [facebook](#) and [YouTube](#)

NOTICE

ERRORS: Each advertiser is requested to check their advertisement the first time it appears. This paper will not be responsible for more than one corrected insertion, nor will be liable for any error in an advertisement to a greater extent than the cost of the space occupied by the item in the advertisement.



PHONE

413.283.8393
Fax: 413.289.1977
Subscriptions: 413.283.8393

EMAIL

Advertising Sales
Jocelyn Walker
jwalker@turley.com

Editor

Kristin Rivers
krivers@turley.com

Subscriptions

\$45 per year pre-paid
(\$50 out of state)

WEB

www.wilbrahamhampdentimes.turley.com

[f](#) @Wilbraham-Hampden Times

The Wilbraham-Hampden Times is published by Turley Publications, Inc. • www.turley.com

Servicing the Construction Industry for over 15 years



Services:

- Hydraulic Hose Assembly
- Hydraulic Cylinder Rebuilt
- Line Boring
- 24-Hour Emergency Service

10% Discount

MUST MENTION CODE TP2024

Products:

- Construction Tools & Supplies
- PPE Products
- Blades, Welding Supplies, Marking Tools
- Specialty Equipment
- And Much, Much More

Find us at
83A Carmelinas Circle, Ludlow

Wilbraham DPW director proposes participation in the Complete Streets program

By Dalton Zbierski
Correspondent

WILBRAHAM – Wilbraham Department of Public Works Director Tonya Capparello proposed to the Select Board on July 22 that the town participate in the state's Complete Streets program.

"This money opens up the possibility for us to take on projects that are financially frightening for us," Capparello said last Monday.

The state Department of Transportation considers a "complete street" to be one that is safe and accessible for all modes of travel, including walking, biking, transit and vehicles, for people of all ages and abilities.

"So, Complete Streets is not a new program; it's been around for quite a while. And we've decided to jump in and see what the temperature is with all the boards starting, obviously, with you guys," Capparello said.

The first step of the process would be submitting a commitment letter to the state that promises the town will adopt a policy within a year. All the town's boards would have to sign off on submitting the letter.

If Wilbraham can move forward with a commitment letter, the state will provide \$39,000 that will allow the town to outline anywhere between 15 and 30 potential projects that could benefit from Complete Streets money.

Capparello said the first pool of money can be used to hire a consultant, who will be extremely familiar with the program and will help the town maximize its efforts.

"We get to prioritize through also a public hearing and meetings. Then, we get to submit an application for funding, and you can get up to \$500,000, and I believe it's every three years you can get that funding," Capparello said.

Capparello noted that there has been past concern in town that the program would force Wilbraham to put "bike paths on every street and sidewalks where, maybe, we don't want them and that it would put a



Turley photo by Kristin Rivers

An exterior shot of Wilbraham Town Hall on Springfield Street in Wilbraham.

burden on the community."

However, the DPW director said the commitment letter is really a commitment to evaluate possible town projects. When the town reviews a road or prepares for a new development, it would be pledging to consider the needs of pedestrians and bicyclists and even the layout of the road to ensure it promotes connectivity.

Capparello said she submitted preliminary information to the Planning Board and Zoning Board of Appeals, and she will soon seek their support. She doesn't plan on sending a full letter of commitment to the state until she can report back to the Select Board that the town's other boards have signed off.

"At first glance, it seems like everybody's supporting this," Capparello said.

Vice Chair Michael Squindo was fully behind the idea. He said he's worked in communities that have participated in the program, and it's been an asset to them.

"I think the people I have spoken to about street issues would support the concept.

From there, obviously, I think having a year to review the policies is enough for me to say I'd be

willing to commit a letter of commitment," Squindo said.

Clerk Marc Ducey was a bit lukewarm on the subject matter but said he'd be willing to look at it further.

"I don't know much more about this other than what I read, so this is new... I would want to hear what (the Planning Board) says," Ducey said. "I just get cautious about taking state money for that because sometimes handcuffs get attached, and that's when you start to worry."

Ducey reaffirmed that he's willing to consider it, he just wants to see what the other boards say before deciding.

Select Board Chair Sue Bunnell said she supports it if the other boards do and said that the program goes back at least a decade. She said she is very familiar with it from her policy work.

"This would certainly help the budget if we can access up to half-a-million dollars of money to support some of the good efforts we keep trying to make," Bunnell said.

Wilbraham Hiking Club August Hikes

WILBRAHAM - The Wilbraham Hiking Club has six hikes planned for August:

Aug. 6 - Sodom Road and Blue Trail Loop, Somers/Stafford/Ellington, CT (and LuAnn's Bakery)

Aug. 11 - High-Moderate or Challenging Hike (stay tuned for details)

Aug. 15 - Quabbin Gate 40, Petersham (and Rose32)

Aug. 19- Springfield Reservoir in Ludlow, MA

Aug. 25 - McDonald Nature Preserve, Wilbraham

Aug. 31- Hike, lunch, and optional Stargazing at Arunah Hill Days in Cummington

More information about these hikes can be found on the club's TeamReach pages, or write to wilbrahamhiking@gmail.com.

Teen Copper Bookmark Workshop

WILBRAHAM- The Teen Department at the Wilbraham Library is happy to announce a Teen Copper Bookmark Workshop on Tuesday, July 30 from 5:00 - 6:30 pm. Metalsmith Heather Beck will teach teens in grades 6-12 to design and create their own copper bookmark. Teens will learn about the structure of copper, how to create drawings in metal with textures, and how to use letter stamps to add words on a copper bookmark. No experience is necessary, all supplies will be provided, and each participant will take their completed bookmark home.

Registration is required and space is very limited. Registration begins on July 10 at 9 am. To sign up, please contact the library at 413-596-6141, or visit the Event Calendar at www.wilbrahamlibrary.org. This program is sponsored in part by a grant from the Wilbraham Cultural Council, a local agency supported by the Mass Cultural Council, a state agency, and the Wilbraham Friends of the Library.

Minnechaug Class of 1974 50th Reunion!

WILBRAHAM - The Reunion Planning Committee for Minechaug Regional High School of 1974 is pleased to announce their 50th Class Reunion will be celebrated the weekend of September 12 -15, 2024. Activities are planned on Friday, Saturday, and Sunday to reunite and reminisce with classmates after 50 years! Join us for food and fun while getting reacquainted. The main event will be on Saturday Sept. 14, 2024 at The Starting Gate at Great Horse Country Club in Hampden. Other activities include a Meet & Greet and Sunday Brunch. Don't miss it! For further information contact Karen Wahlberg at mrhclassof74@gmail.com and follow us on Facebook - Minnechaug RHS Class of 1974.



HASBEEN
Collectible Toys & Comics

WE BUY, SELL & TRADE

WE WANT TO GIVE YOU CASH

for your old toys and comic books!

We specialize in comic books and toys from the 1950s through the 1980s to today.

Make room in your attic or space in your basement. Let us help you empty out your garage!

Call or text us at **413-279-4389**
Email: info@hasbeentoyandcomics.com

We are family owned and operated by a Wilbraham resident!

2378 Boston Road, Wilbraham
(Right next to Frame & Picture Shoppe)

Hours: Tues.-Fri. 11-6 • Sat. 10-5 • Sun. 11-4



CENTER STREET AUTO PARTS OF CHICOPEE, INC.

We will pay you top dollar for your car AND we will pick it up! Call us for a price!

- Top-Of-The-Line Auto Salvaging Services
- First-Rate Used Auto Parts
- Top-Grade Auto Body Parts
- Sell Your Old or Used Car to Us

"Serving all of Western Mass."

centerstreetautoparts.com
651 Center St., Chicopee **413-733-2778**

LOWER PRICES TO BOOST YOUR BUDGET! **INFLATION** **PRICE BUSTERS** **PRICES IN RED ARE AT OR BELOW LAST YEAR'S PRICES!**

USDA INSP. FRESH BONE-IN ASSORTED PORK LOIN CHOPS.....	\$2 ³⁷ lb	USDA INSP. FRESH BONELESS BEEF TENDERLOIN CUT FREE	\$9 ⁸⁸ lb	USDA INSP. FRESH BONELESS NY STRIP STEAKS.....	\$8 ⁸⁸ lb
USDA INSP. FROZEN PORK SHOULDER PICNIC....	\$1 ²⁹ lb	USDA INSP. FRESH BONELESS BEEF SHOULDER LONDON BROIL	\$4 ⁹⁹ lb	USDA INSP. FRESH BONELESS & SKINLESS CHICKEN BREAST 10 LB BAG.....	\$2 ²² lb
USDA INSP. FRESH BONELESS PORK BUTT STRIPS.....	\$2 ⁹⁹ lb	USDA INSP. GROUND FRESH DAILY 80% LEAN GROUND BEEF 7 LB BAG	\$3 ⁷⁹ lb	USDA INSP. FRESH CHICKEN THIGH 10 LB BAG.....	\$1 ⁵⁵ lb
SLICED IN OUR DELI MUIENSTER CHEESE.....	\$5 ⁵⁵ lb	USDA INSP. STORE MADE BONELESS CAROLINA GOLD MARINATED CHICKEN THIGHS.....	\$2 ⁹⁹ lb	USDA INSP. FROZEN AT SEA SEA BASS FILLETS.....	\$7 ⁹⁹ lb
SLICED IN OUR DELI HORMEL SMOKED HAM.....	\$4 ⁹⁹ lb	USDA INSP. STORE MADE BONELESS KOREAN BBQ MARINATED PORK BUTT STRIPS.....	\$3 ³⁵ lb	USDA INSP. IQF FROZEN COOKED SHRIMP 26/30 COUNT 2 LB BAG.....	\$8 ⁹⁹ ea

GREAT ON THE GRILL

SALE DATES: 8/1/24-8/7/24

90 Meat Outlet
90 Avocado St. Springfield 413-737-1288
www.90meat.com

HOURS: Mon. - Wed. 8-4
Thurs. 8-6 • Fri. 8-6 • Sat. 8-3

BUY DIRECT FOR SAVINGS • SELECTION • SERVICE

We reserve the right to limit quantities.

INSURED AND CERTIFIED

Tree Removal



Structural Pruning



Crane Service



Storm Damage



Stump Grinding



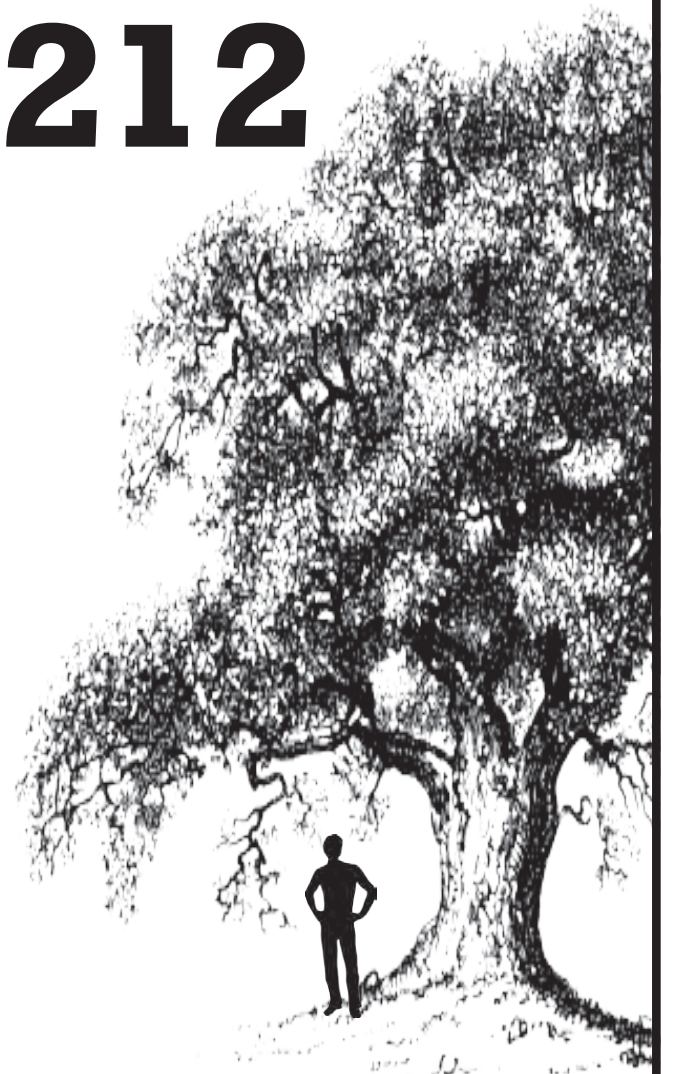
Lot Clearing



Give us a call for your free estimate and tree evaluation

413-478-4212

DL&G TREE



VIEWPOINTS

The Garden Lady tackles the Rose of Sharon

Paul, who gardens in Palmer, wrote in with this timely question for the Garden Lady: "My question deals with the Rose of Sharon and the many seedlings that it disburses. I have a large bush/tree in my front yard, and it disburses many seedlings. I have weeded the seedlings going on three times this spring and summer. When is the best time to cut the dead blossoms off the tree so that I don't repeat this task? Please share any other hints/ideas about the Rose of Sharon shrub."

This is a perfect question, since bloom time for the Rose of Sharon (*Hibiscus syriacus*) is right around the corner.

Like you, I am familiar with the shrub's tendency to self-sow, a lot. The best way to halt all of the seedlings coming is to "dead-head" the flowers as they begin to fade, before they are given the opportunity to make and drop seed.

Some would argue that this is, in fact, as much or more work as weeding the seedlings away. I guess it all depends whether you prefer to work standing up or on your hands and knees.

One suggestion I have would be to weed by use of a scuffle hoe. It's a tool you use standing up whereby you drag the scuffle across the soil.

It cuts the weed away from its roots, stopping it dead in its tracks. If you do this every week, the weeds will be so small that they will just wither in the sun- you don't even have to pick them up.

That may be the easiest way out of your overabundance of seedlings.

You also asked for some information about the shrub. Here are some excerpts from a column I wrote a few years ago that you might find interesting, especially in regard to the appropriate time of year to prune.

The Rose of Sharon is also known as Shrub Althea. It is a member of the mallow family, a diverse bunch of plants that include hollyhocks, marsh mallows, cotton, okra and even tropical hibiscus as kin.

Although native to Asia, it had already found a home in North America by 1600. In the 19th



century it was among the most popular shrubs in the nursery trade. It grows well in zones 5-8.

The Rose of Sharon has an upright growth habit that lends itself well to all types of combination plantings: in foundation plantings, as stand alone hedges, and as the backdrop for perennial borders. Likewise, a single shrub can be trained to be an outstanding specimen.

Because its flowers are borne on new growth rather than old, pruning can be accomplished in late winter or early spring without the risk of sacrificing blooms. As with most shrubs, concentrate first on removing any dead branches, then remove those that are crossing or rubbing on one another.

If growth needs to be checked, cut well into the shrub to decrease its height and girth.

Cutting back to a bud that points outward and in the direction of least competition will result in a bushy, less lanky shrub- one suitable for use as a specimen. Frequent pruning results in fewer but larger flowers, whereas no or little pruning gives way to many small flowers.

Plant the Rose of Sharon in full sun or part shade situations. Although it is tolerant of many types of soil, from seashore sandy to wet, this shrub prefers deep, well-drained soil to perform its best.

Fertilization is rarely necessary.

Although Japanese beetles are said to favor the flowers, I haven't had much of a problem with them at home or at work.

To intentionally propagate this plant, simply take a softwood cutting four or five inches long in early summer. Remove lower foliage and insert into the ground in a shady location.

Water as needed.

By the season end roots will have likely formed, but wait until spring to move your cutting to a nursery bed.

As mentioned, seeds of the Rose of Sharon have also been known to sprout under the mother plant, sometimes to the degree of being a nuisance. Grow these seedlings on and see what color or flower you get; there is no guarantee it will be the same as mother.

Single or double hibiscus shaped flowers come in shades of red, pink, purple and white, depending on the cultivar. Like those of their tropical cousin, individual Rose of Sharon flowers bloom for a single day, close at night, then eventually drop from the plant.

Even at that rate, flowering occurs for many weeks throughout late July, August and sometimes into September.

In my opinion, single flowered cultivars are more desirable; they put on a better show and are more tolerant of rainy weather. Double types turn to mush after a rainstorm - much like petunia flowers do. Not very attractive and oh so squishy!

"Diana" is my all time favorite cultivar. Four-six inch pure white single flowers bloom in abundance, even through the night, making it a perfect candidate for use in a moonlit garden.

"Woodbridge" is another popular variety. It is deep pink and darker at the base. "Blue Bird" is unique, sky blue with a red center.

Roberta McQuaid graduated from the Stockbridge School of Agriculture at the University of Massachusetts. For 32 years she has held the position of staff horticulturist at Old Sturbridge Village. She enjoys growing food as well as flowers. Have a question for her? Email it to pouimette@turley.com with "Gardening Question" in the subject line.

Will IRA withdrawals affect my Medicare premiums?



Dear Rusty:

I am a member of AMAC and learn so much from the Ask Rusty column.

I hope you can give me some information about a question that has come up in my family. My husband is retired and has reached Full Retirement Age. He is considering withdrawing money from an IRA to pay off our mortgage. We are wondering what, if any, penalties may be incurred on Social Security, Medicare and income tax. Thank you for your help in this matter.

Signed: Concerned Taxpayer

Dear Concerned:

Thank you for contacting the AMAC Foundation Social Security Advisory Service.

Regarding your question on the impact of withdrawing IRA funds, there is no impact to your husband's gross Social Security benefit. The amount withdrawn, of course, is considered ordinary income for federal income tax purposes and will need to be included as such on your federal income tax return and will therefore affect your federal income tax liability when you file the return.

Depending on the amount withdrawn, there could be an impact to the Medicare premium due to the Income-Related Monthly Adjustment Amount provision. Assuming you file jointly, you will pay a higher Medicare Part B premium if your modified adjusted gross income is above certain thresholds, i.e., more than \$103,000 for an individual and \$206,000 for a married couple.

Please note that Medicare's procedures will not note this income change for two years, so

if you make the withdrawal in 2024 it will not trigger the increases until your 2026 Medicare premiums. A change to your Medicare premium might also result in a change to your net Social Security payment at that time since Medicare is automatically deducted from your Social Security payment.

Also depending on the amount withdrawn, you may have to pay an additional amount on top of your Medicare Part D premium. The Part D adjustment amount is calculated based on a percentage of the Part D national base beneficiary premium, not on a percentage of the plan premium.

The Social Security Administration mails letters to beneficiaries, who currently pay a Part B Income-Related Monthly Adjustment Amount and, according to the Centers for Medicare and Medicaid Services, are in a Part D plan. The letter explains the additional Part

Please see **MEDICARE**, page 7

Election letters to the editor welcome

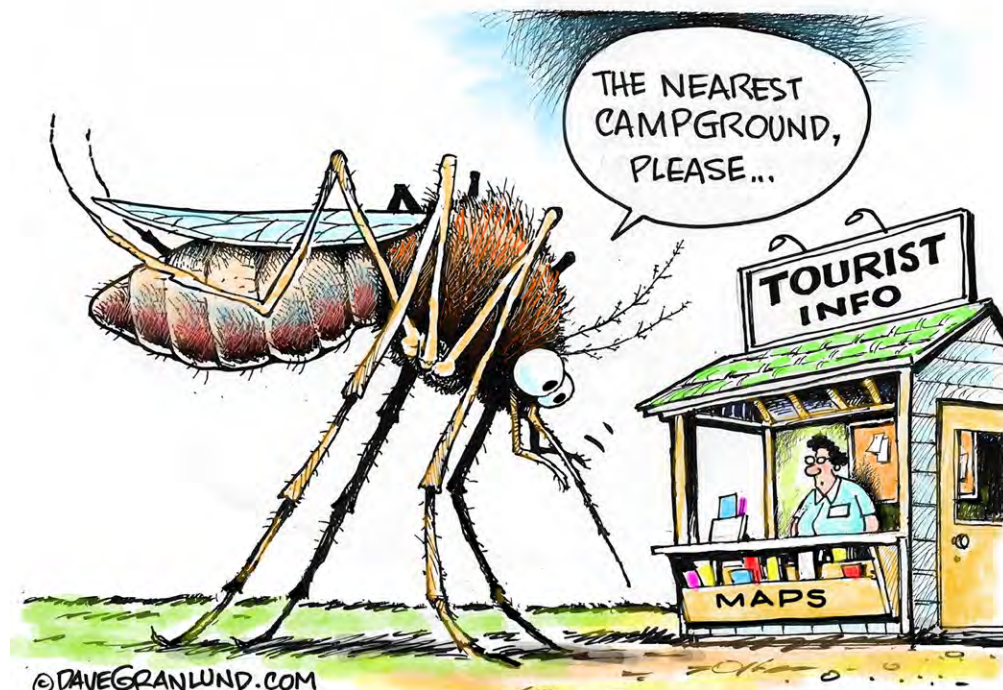
The Wilbraham-Hampden Times welcomes readers to participate in this year's election campaigns by writing letters to the editor for publication on these pages. Letters of up to 250 words from local residents endorsing candidates on the ballot or discussing campaign issues should be sent to Wilbraham-Hampden Times, care of Turley Publications, 24 Water St., Palmer, MA 01069, faxed to 413-289-1977 or emailed to krivers@turley.com. Please include a daytime telephone number for verification purposes (it will not be printed). Letters must be received by noon Monday to be considered for that Thursday's newspaper. No attack letters will be printed. No letters written by candidates supporting their own candidacy will be printed. If the volume of letters received is larger than the space available in the newspaper, or if the letters become repetitive, the newspaper reserves the right to print a representative sample. No endorsement letters will be printed in the last edition before the election.

For more information, call the editor at 413-283-8393.

Campaign news

As part of its election coverage, the newspaper plans to print stories about contested races for Congress, state Senate, state House, district attorney and Governor's Council during the weeks leading up to the election, as well as a question-and-answer voters guide. In order to ensure fairness to all candidates, no political press releases will be printed, nor will reporters cover political rallies or fundraisers.

Candidates who wish to further publicize their candidacy, beliefs and events may contact advertising, 413-283-8393 about paid advertising in Wilbraham-Hampden Times.



The Wilbraham-Hampden TIMES TEAM



EDITOR
Kristin Rivers
krivers@turley.com



ADVERTISING SALES
Jocelyn Walker
jwalker@turley.com



SPORTS EDITOR
Greg Scibelli
sports@turley.com

The Wilbraham-Hampden Times is published every Thursday by Turley Publications, Inc., 24 Water St., Palmer, Mass. 01069. Telephone (413) 283-8393, Fax (413) 289-1977.



@Wilbraham-Hampden Times

WEB

www.wilbrahamhampdentimes.turley.com

PATRICK H. TURLEY
CEO

KEITH TURLEY
President

DEANNA SLOAT
Graphics Manager



www.turley.com

Turley Publications, Inc. cannot assume liability for the loss of photographs or other materials submitted for publication. Materials will not be returned except upon specific request when submitted.



Editorial Policy

Letters to the editor should be 350 words or less in length. No unsigned or anonymous opinions will be published. We require letter writers to include his or her town of residence and home telephone number. We must authenticate authorship prior to publication. We reserve the right to edit or withhold any submissions deemed to be libelous or contain unsubstantiated allegations, personal attacks, defamation of character and offensive language. All unknown or alleged facts and quotations offered by the author need to cite credible, unbiased sources. Send letters to: Editor, Wilbraham-Hampden Times, 24 Water Street, Palmer, MA 01069, faxed to 413-682-0013 or via e-mail to dzberski@turley.com. The deadline for submissions is Friday at noon.

Correction Policy

The TIMES will gladly correct factual errors that appear in this paper and can be substantiated. Corrections or clarifications will always appear on the editorial pages. To request a correction, send information in an e-mail or mailed communication to the editor at the above address listed above.

The Wilbraham-Hampden TIMES is published every Thursday by Turley Publications, Inc. One year out of town subscriptions are available at \$45, out of state \$50 by calling 800-824-6458 Ext. 201. The deadline for submission of news material, letters to the editor and photos is Monday at 12 p.m. The TIMES is not responsible for submitted photos.

DEMENTIA from page 1

hosting--the training is an opportunity for everyone to come together and support those living with dementia and their caregivers, stressing how "we all have a role to play in making Wilbraham a more dementia-friendly community."

"It's an opportunity to give back. The Wilbraham community is a wonderful community with so many great people and organizations who support one another," Perry said. "When I meet with people, I want to ensure I am providing them with an amazing customer experience, and this includes those living with dementia and their caregivers. Being armed with the resources necessary to do so is extremely rewarding."

Krupka shared the training is the first-with more to come--and helps attendees become a Dementia Friend, helping raise public awareness and practice patience, kindness and empathy.

The next training is on Aug. 28 from 4:30 to 5:30 p.m. at Country Bank on Boston Road.

She added the committee had also hosted information sessions at the library, Orchard Valley Assisted Living, the senior center, town hall and Country Bank.

"We are hoping to have some listening sessions, send a town survey to local older adults and even work to partner with our schools to provide education to local children. We have a Facebook page so people can keep up to date with what is going on and information is also available at the senior center," Krupka said.

During the training, Krupka also shared about Dementia Friends Massachusetts, a global movement that is also part of the initiative.

"The goal is to help everyone in a community understand the five key messages about dementia, how it affects people and how we can each make a difference in the lives of people living with dementia," Krupka said.

Harrington wants to include other businesses and organizations in the training, including restaurants, insurance companies, the town hall and more, thrilled to have the Country Bank staff, the East of the River Chamber of Commerce and others take part.

"It meant a lot to us because they deal with so many people and they have information, so they could put it forward to their clients, to their family members," Harrington said. "We start here and it goes to the next person, to the next person, so it's like this beautiful lake and you throw the pebble in and all that information just goes out."

Harrington hopes participants took away more understanding and learned something they didn't know before.

"They can go forward and just spread the word, letting people know," Harrington said. "Listening to other people's stories, you can take something away. 'Oh my gosh, I never thought of it that way. That individual has a point. That was a great point they brought out.'"

Harrington wants the community to know information is out there for them along with support, open to all.

"It is not just for seniors," Harrington said. "It's for the whole town."

Perry encourages everyone to attend future Dementia Friend trainings.

"We invite anyone interested in learning more to join us for a one-hour session that will change the way you view those living with dementia," Perry said. "This training will equip you with the knowledge,



A photo of a Dementia Friend sticker, a token participants received at the Dementia Friend Training at Country Bank.

understanding and empathy needed to support individuals with dementia. As a community, we can work together to change the stigma around dementia."

Krupka also stressed attending the training and becoming an advocate.

"By completing the training or educating yourself and your employees, you can be confident that you are offering a



A sign and brochure on display at Country Bank in Wilbraham providing information on becoming a dementia friend and the Age and Dementia Friendly initiative in Wilbraham.

safe place for those with dementia to feel comfortable living their lives. For example, someone who is facing some memory and executive functioning challenges may no longer feel comfortable going to their favorite restaurant as the menu can be overwhelming, or it is too loud," Krupka said. "If the staff at this restaurant is educated, they can think of alternatives to make this person feel more safe and secure in that environment, by offering a table in a quieter location, or an abbreviated menu. There are so many things that can be done at all businesses to address these concerns."

Information and resources can be found at Country Bank, the senior center, Orchard Valley of Wilbraham, the Age and the Dementia Friendly Wilbraham Facebook page.

To learn more, contact Krupka at 413-329-6730 or katie@assistedlivinglocators.com.

Henna Tattoos for Kids and Teens at the Wilb. Public Library

WILBRAHAM-- Two henna tattoo programs will be held at the Wilbraham Public Library on Wednesday, Aug. 7. Children in grades 2-5 and Teens in grades 6-12 can get their own unique henna tattoo from artist Mandy of Wicked Good Henna. Henna is safe for all skin types and is temporary. There will be many designs to choose from at each program.

Registration is required and starts on July 15 at 9 a.m. Space is limited! Sign

up for one 20-minute timeslot, with the Kid's event starting at 1 p.m. and Teen's event starting at 2 p.m. To sign up, visit the Event Calendar at www.wilbraham-library.org or contact the library at 413-596-6141. Both programs are sponsored by a grant from the Wilbraham Cultural Council, a local agency supported by the Mass Cultural Council, a state agency, and the Wilbraham Friends of the Library.

A Conversation with a Holocaust Survivor, at WPL

WILBRAHAM-- Holocaust survivor Abraham Rodstein will share his life story at the Wilbraham Public Library on Monday, Aug. 19 at 6 p.m. Facilitated by local writer Thomas Slawiak, Rodstein's discussion will include his journey before, during, and after World War II-- from growing up in Lithuania, to surviving the Kovno Ghetto and Dachau concentration camp, to emigrating to America.

Slawiak and Rodstein have spoken to over 2,000 people at schools, senior centers, libraries, and private venues. They are dedicated to educating people about the Holocaust and preventing such horrors from happening again.

Registration for this free event is encouraged as space is limited. To register, please contact the library at 413-596-6141, or visit the Event Calendar at www.wilbrahamlibrary.org.



Turley photos by Kristin Rivers

Katie Krupka, senior care advisor at Assisted Living Locators, provides information and tips during the Dementia Friend Training at Country Bank on Boston Road. A video shared during the training provided further background on how to be a friend to those living with dementia in the community.

MEDICARE from page 6

D amount and how exactly Social Security will collect it. You can contact SSA at 1-800-772-1213 or your local SSA agency if you have any further questions about your Part D IRMAA premium.

The Association Mature Citizens Foundation and its staff are not affiliated with or endorsed by the Social Security Administration or any other governmental entity. This article is intended for information purposes and does not represent legal or financial guidance. It presents the opinions and interpretations of the Association Mature Citizens Foundation's staff, trained and accredited by the National Social Security Association. To submit a question, visit amacfoundation.org/programs/social-security-advisory or email us at ssadviser@amacfoundation.org. Russell Gloor is a Social Security advisor for AMAC.

Your Retirement is *literally* Right Around The Corner

at
TROMBLEY ASSOCIATES
Investment and Retirement Planning

- Located in Post Office Park, Wilbraham
- Helping clients live their best financial life since 1965
- Accomplished, Friendly and Professional
- Contact us for a no-fee consultation



Mike Trombley, Financial Advisor, Former MLB Player; Barbara Trombley, CPA, Financial Advisor



85 Post Office Park • Suite 8524
Wilbraham, MA 01095
Phone 413-596-6992

trombleyassociates.com

Securities offered through LPL Financial. Member FINRA/SIPC. Advisory services offered through Trombley Associates, a registered investment advisor and separate entity from LPL Financial.

SOLAR from page 1

The facility in question will be an agricultural-mounted system with an interior array of areas maintained as pasture fields for grazing sheep, cattle and chickens to be managed by Ledge Valley Farm.

The applicant for the project is Rory Walker, president of ZeroPoint Energy Consultants.

The project has been a hot-button issue in town, with many residents expressing concerns about noise, battery energy storage, the parking of commercial vehicles, protection of wildlife and concerns about impacts on water supply and stormwater.

In an unexpected twist one week later, a request to withdraw the application without prejudice or continuance was filed and later approved by the Planning Board on July 24.

So, what led to these two decisions? Let's take a closer look.

Conservation Commission Reviews Timeline

On July 17, Conservation Commission Co-Chair Judy McKinley Brewer explained this would be the commission's final discussion on the project with a vote to take place, providing a timeline from the initial project--which went through nine months of delineations from February to October 2023--followed by the initial project presentation in December 2023 and hiring Tighe & Bond to do two rounds of peer review.

A third peer review was requested, which occurred at the June 25 meeting.

"So, we've had three rounds of peer reviews of the NOI and the stormwater report by Tighe & Bond, mostly monitored by Jean Christie. Comments were provided as well by DEP and the commission, a few other experts that were recruited and many residents. The last round of peer review was presented at the meeting on June 25 and we had a presentation and review of the revised riverfront restoration, leaving just a few items that need to be covered tonight," McKinley Brewer said.

Agricultural Integration Plan Review

The Agricultural Integration Plan was presented by Caleb Scott of United Agri-voltaics North America, LLC, who was unable to attend the prior meeting.

Scott explained the site was "basically" designed "to integrate agriculture from top to bottom."

"Essentially, I just wanted to make myself available for any questions you

guys might have regarding the plan that was proposed," Scott said.

McKinley Brewer had several questions for Scott, with the biggest discussion centering on the animals.

"When the animals have to move between grazing areas, how will they get there? It looks to me like they would have to travel across the BBW," McKinley Brewer said.

Scott said, oftentimes, these areas "are separated with laneways or trails already" or roadways connecting them.

"We'll just set up temporary electro-netting along the roadway and then the animals can move. We'll use a border collie probably or grain train them to move from one area to another," Scott said.

"So, you can move them along the road and not through the BBW, is that what you're saying?" McKinley Brewer said.

Scott affirmed yes. "We'll move them on the traditional roadways, yes," Scott said. "We move them from site to site so as we move them from the one site to the next site, it's less complicated than you might think."

"But most people are used to ignoring the BBW, so that's what we're trying to protect here," McKinley Brewer said.

Scott agreed to keep to the roadways. Grass species was another major highlight.

"There's been a lot of discussion about the grass species and how susceptible those are to getting trampled, grazed. The land is stony. A little bit of it at the very front is prime farmland. The rest is stony soil, so do you have species that can survive that and keep it covered?" McKinley Brewer said.

Scott replied they did soil studies in the area for this to develop a seed mixture ideal for the forage of livestock and animals "and for height restrictions that might be necessary with the panels."

"We're only going to make that soil better because as these sheep migrate into that area, that soil is going to become very prime agland over time," Scott said.

When McKinley Brewer said how the site plan asking for 46 inches of extra loan was not in the agricultural plan, she asked if this is still planned.

Nick Facendola, principal at Level Design Group, clarified that was still part of the plan.

"That would be the plan specifically through the wooded areas where we're going to be converting to pasture," Facendola said. "As you know, some of the site is currently pastured in field area..."

"But some of them are very bare," McKinley Brewer said.

"Depends on the area. We did go do agricultural soil testing where we did a variety of--I think it was 31-foot deep borings--and we did send soils to UMAss for testing through a majority of those open field areas," Facendola said. "And the results showed that that material was going to be suitable for grazing, but it's the wooded areas that are going to need to, likely, have the additional loan added to them, so yes that is the plan to loan those areas prior to seeding, specifically in the areas which are currently wooded vegetation."

Questions from Residents

Don Davenport had a series of questions, with the biggest highlight around fencing.

"There's going to be a perimeter fence around the whole array and you're going to have paddocks. Are the paddocks going to be fenced as well?" Davenport said. "Is it a movable fence?"

Scott replied that would be left up to situational awareness, meaning if the paddock needs to be divided up "with some sort of poly wire, we certainly can and will."

"But, as it is set now, the plan is just to move the sheep from one separate array that is fenced into another separate array that is fenced in..." Scott said.

"So, the arrays will be fenced in fully?" McKinley Brewer said. "They won't be able to get out and get on the BBW right?"

"That's correct," Scott said. "And not only will they be fenced into the EPC specifications, like tight to the ground, and so that we don't from a farmer first standpoint, we don't have to worry about predators coming in or our sheep escaping. Gates will be closed and tight together..."

Here, Davenport spoke up to clarify his question, with Scott saying the grazing "will happen within that fenced-in area for each separate fenced-in area."

"We may or may not decide to divide each separate section up with poly wire as we see fit from a farming standpoint," Scott said. "But that's not necessarily in the plan as it is right now."

After other residents asked about the animals and grazing concerns, Gina Stabilo focused on how there would be some mixed grazing between the pigs and poultry.

As Scott began explaining this, Stabilo then said this.

"I'm going to stop you right there because I understand you want to give a detailed explanation, but the Massachusetts Department of Agricultural Resources does not recommend that you mix birds with other production animals because of Avian Flu," Stabilo said.

Scott replied he understood that was a concern, but said Avian Flu "does not transfer from the birds to the animals."

"We are very aware of all the rules and regulations. It's our livelihood. We can't do this without understanding all the ramifications, the pros and the cons," Scott said. "We've found it to be beneficial in many instances to run a few and I'm not talking about massive production amounts of certain species with other species."

As Scott continued providing examples, Stabilo continued seeking clarification.

"I mean, ultimately, what's your game plan if the entire flock gets Avian Flu?" Stabilo said.

"The entire flock won't get Avian Flu because Avian Flu is a bird disease," Scott said.

This part of the discussion was quickly shut down by the Conservation Commission.

"That's not really relevant to this project because it's just a farm question," McKinley Brewer said.

John Matthews presented his concerns about the water supply regarding nitrogen loading from manure and where it's going to go during the winter.

"How do we ensure that brook isn't going to get contaminated--and I'm saying contaminated--how do we assure ourselves that downstream we're not going to

be contaminating the town's water supply?" Matthews said. "Are we going to do water sampling?"

McKinley Brewer explained the Board of Health had voted that Monday--July 15--to require water testing for E.coli and is now part of the conditions for the project.

"That will be done a very regular basis as a continuing condition, which means it lasts even after the project is over," McKinley Brewer said. "Until the commission decides not to."

She added there would be testing at the infiltration basins and on several sites along the riverfront.

The 25-foot no-disturb zone was also brought up again, another concern for the project, when Tammie Chaffee explained the buffer zone for the panels would be in that buffer zone.

"There's no other fencing," Chaffee said. "You got panels in the buffer zone. Are the sheep going to be in those panel areas?"

Facendola clarified yes. "That's the proposal that those areas are going to be the pastures, the areas underneath the panels. Which will all be fenced in," Facendola said. "There are portions of those areas in the 100-foot buffer zone."

He added there's "additional fencing interior to the perimeter fencing."

"The idea is there's the perimeter fencing which is required for the electrical codes, for safety, then we're going to have additional interior fencing and gates..." Facendola said. "Doesn't go up to the 25 foot. We are up to the 25 foot in some areas. On the easterly part of the site, we're about 50 feet. It kind of varies but we are a little bit further than the 25-foot zone through that area with the final fencing."

Peer Review Comments Addressed

Peer review comments were addressed, with the culvert and slope of the culvert updated from the 25-year standard to the 100-year standard, modifications made to the recommendations suggested by Gary Weiner on the mound basin calculations from the stormwater report and the definition of particular flow areas that were used.

The shade analysis being declined, Walked explained, concerned the standards and additional analysis, which would have created a larger shadow and clearing of more trees.

"So, again, the goal was to clear the minimum amount of trees in order to minimize the disturbance," Walker said.

The curve numbers generated the biggest discussion, with Weiner saying he agreed with Facendola's earlier comments of Tighe & Bond agreeing with his numbers being adequate "to potentially protect the resource areas that we have been trying to protect for years and years in this town."

"However, the University of Massachusetts is currently reviewing curve numbers for solar installations and the Department of Environmental Protection Solid Waste Bureau because of concerns that they had and with problems that they've had with solar arrays on their landfills are currently looking at the curve," Weiner said. "So, when I raised the question about curve numbers and runoff and the amount of water going off of that site, I was trying to start the conversation that on 25% grades and less steep grades, you have areas which were uncontrolled."

Weiner emphasized the uncontrolled flow areas as they flow into the buffer zone and, consequently, to the wetlands, as his main concern and purpose behind his letter to Tighe & Bond.

"So, my question to Tighe & Bond was about modeling at the property lines where the discharges are. They chose to say, 'That's a great point, however, we will stand with the modeling from the developer,' and I still raise the question. I hope that your controls would extend even further along the slopes as you got them there," Weiner said. "In the north-east corner, you've got some serious

Please see **SOLAR**, page 9

JOB FAIR – August 7th Join the Green Gold Team!

**Green Gold Group
will be hosting a Job Fair on
Tuesday, August 7th from 5:00-8:00pm
at St. Stanislaus Polish Club,
2114 Main St, Three Rivers, MA 01080**

Cannabis Dispensary,
Green Gold Group is coming to Palmer!
We are looking for hardworking, dedicated team
members to staff our new retail store.
Available positions are General Manager,
Sales Floor Manager, Inventory Manager,
Check-in/Security, and Sales Team members.
Full-time and part-time work available.
All positions require availability for day, night,
weekend and holiday shifts.
All positions subject to background/CORI check.
Must be 21 years of age to apply.

**Don't miss out on this exciting
opportunity to enter the cannabis
industry by joining the Green Gold team!**

SOLAR from page 8

flows. Also, water runs 90 degrees to the contours as you know and there are areas where uncontrolled water are going to come off of those panels and, again, the potential for erosion is much greater on the slopes based upon the soil types...and so that was the purpose there. I'm still concerned."

Facendola agreed with Weiner's points and is aware of the areas of concern, adding there are provisions in the operations and maintenance plan to address them.

After further comments from Weiner on the erosion concerns and making sure there are continual inspections, Facendola also agreed to those conditions.

When the peer reviews concluded, however, Facendola expressed frustration to the commission, stating how there's an operation of maintenance plan and it has been reviewed.

"I think when you start to over condition and put too many specifics, like a lot of these things either don't get done or don't get followed up on and it's the responsibility of the town in the end," Facendola said. "I think keeping the general inspection, review the stormwater basins, just general review of the site condition, provide a report on--I'd say--a yearly basis would be reasonable. If there's an additional follow-up, that can happen at that time, but, when you start saying you need to look at these 35 points on a plan, that becomes onerous and not feasible."

Facendola said he respected the comments presented but stressed the plan was becoming over-conditioned, adding the operation of maintenance plan is reasonable.

"I've read them all. I believe they're all reasonable for the project and where we are," Facendola said.

The Vote

After further discussions, the Conservation Commission voted 3-0 to reject the plan, with one abstention as one of the members had not been to all the meetings on the topic.

McKinley Brewer cautioned the residents not to get too excited about this denial.

"There's about a 50/50 chance that DEP will make revisions and accept it, but one good thing about that would be they would monitor it," McKinley Brewer said. "I'm sure it will be appealed and it still has to go, in any

case, through the Planning Board and the Board of Health and the (Board of Selectmen). So, even if DEP reinstates it, it's not a done deal."

Planning Board Approves Withdrawal

As stated earlier, a week after the Conservation Commission meeting, the Planning Board received a request to withdraw the petition without prejudice or continuance.

Walker appeared via Zoom along with his attorney, Adam Costa, for the withdrawal.

Costa explained they were indeed requesting a withdrawal for the application without prejudice, adding how the proposal was denied the week before by the Conservation Commission.

"We have a number of options as it relates to that denial. We can choose to revise the project and resubmit it to the commission. We can choose to abandon the project, we can choose to file one or more appeals under the Wetlands Protection Act or the town's local wetlands bylaw," Costa said. "We've been discussing those options amongst ourselves, but the reality is that we know one way or the other what we are unlikely to be doing is to be proceeding with the exact same project in the exact same form as it's currently been submitted to the Planning Board."

Costa said he and Walker talked about continuing the proceedings "in an effort to gain the board's approval, only to later come back and possibly modify that approval."

"But, to be candid, that seemed like a bit of a waste of not only our time, but your time and the time of those who have attended the first session of the public hearing and who would be required to attend future sessions of the public hearing as well," Costa said. "So, the right thing to do--the most efficient thing to do--seemed to be to withdraw the application and, again, go back to the drawing board. What the future might bring, we don't currently know, but, at this time, we don't intend to pursue the current application or the current project in its present form."

After Planning Board Associate Member Joe Sibilia asked procedural questions for clarification on the vote and what would happen next, the Planning Board approved the applicant's request to withdraw without prejudice or continuance 4-0.

Events & announcements schedule

Summer Reading at the Wilbraham Public Library

WILBRAHAM– The Wilbraham Public Library's annual Summer Reading Challenge launches Saturday, June 15. Designed for all ages, the theme of this year's challenge is "Read, Renew, Repeat." Featuring conservation, the theme focuses on protecting species from extinction, maintaining and restoring habitats, enhancing ecosystem services, and protecting biological diversity. Participants can log their reading to earn rewards and raffle tickets for a chance to win prizes. All three programs– for children, teens, and adults– are accessible online via Beanstack. Learn more about each age group and register for an account by visiting wilbrahamlibrary.beanstack.com, or by downloading the Beanstack Tracker app. Children and adults can also participate by completing paper logs available at the library. All reading logs, reviews, and raffle tickets must be submitted by Aug. 10 at midnight. Raffle winners will be announced starting Aug. 20. Let's get reading and have fun!

The Massachusetts Statewide Summer Library Program is funded by the Massachusetts Library System, the Boston Bruins, MBLC, the Wilbraham Friends of the Library, the Wilbraham Cultural Council, along with partnerships with Pathways for Parents & One Book One Community, and donations from Rice Fruit Farm, Starbucks of Wilbraham, Texas Roadhouse, LUSO, and Interskate 91.

HPL Summer Reading Program for Adults

HAMPDEN – The library's Adult Summer Reading Program runs from June 22 through Aug. 3.

Registration begins on June 22 during the library's Summer Reading Kickoff event by signing up at the front desk. After reading a book, participants will fill out a book review slip and hand it in.

Your contact information will be cut off the reading log for the raffle drawing and handed to you to choose your prize. This year's prizes are \$50 gift cards to local businesses, with one winner to be chosen from each box to win a prize.

Then, celebrate the success of summer reading at the Adult Summer Reading Social on Saturday, Aug. 3 at Noon to chat about favorite reads, share vacation stories, and enjoy light refreshments.

The raffle prizes will be drawn at the social.

Summer Reading 2024 is made possible through the generosity of the Massachusetts Board of Library Commissioners, Mass Regional Library Systems, Friends of the Hampden Free Public Library and the Hampden Cultural Council.

HPL Teen Summer Reading

HAMPDEN – The library's Teen Summer Reading program takes place from June 22 through Aug. 3 for grades five through 12.

Please see **EVENTS**, page 20

LUDLOW MEMORIAL COMPANY INC.

Celebrating over 60 Years in Business ~ The Trusz Family

- ◆ Benches ◆ Statues ◆ Monuments ◆ Custom Design Work
 - ◆ Plot Maintenance ◆ Bronze Plaques ◆ Cleaning ◆ Markers ◆ Vases
 - ◆ On-Site Lettering ◆ Restorations ◆ Cemetery Signage ◆ Granite Signs
- 201 East St., Ludlow, MA 01056 ◆ www.ludlowmemorialcompany.com
413-589-7564 Office ◆ 413-589-7588 Fax ◆ 413-531-5360



Murray's Home Improvement

- Siding
- Windows
- Decks
- And More!

**Call 413-237-3782
or 413-374-2332
for a Free Estimate**

BEFORE



AFTER



BEFORE



AFTER



WISH IT. DREAM IT. DO IT.



This view could be yours, call me today!

Maureen McGarrett Hall
REALTOR®

MA 9585138 | Member MLS | Equal Opportunity Housing | 

413-364-4994
realtybymaureen@gmail.com
maureen.gogallagher.com





A COMMUNITY GALLERY

Ice Cream Social fun at Hampden Senior Center



Fun times were had when seniors gathered together on July 25 to enjoy some ice cream on National Hot Fudge Sundae Day.



Even grandkids joined in on the ice cream fun with senior center friends on July 25.



Seniors could not resist an ice cream treat while enjoying time together in Hampden.



Loomis Lakeside at Reed's Landing also provided Open House information to attendees. The Open House took place on July 31.

You also can't go wrong with an ice-cream themed table when serving ice cream during National Hot Fudge Sundae Day.

A couple of smiles as people awaited the beginning of the Ice Cream Social during National Hot Fudge Sundae Day on July 25.



A hot fudge sundae treat with friends and neighbors is a fun way to beat the heat!

Life in & HAM
Readers are encouraged to send in medium to high resolution photos for this page by e-mail to dzbierski@turley.com or mail to TIMES, 24 Water Street, Palmer, MA 01069. Please note that if you send us a photo of the Times in different parts of the world, please include a recognizable landmark in the background. Examples: Eiffel Tower; castle in Spain.

WIL HAM



The lines
Hot Fudge

Submitted photos
Diane Marino



These two

THIS PAGE IS BROUGHT TO YOU

WILLIAM RAVEIS

REAL ESTATE

264 N Main St. Unit 12, East Longmeadow, MA

413-687-4339

Heidi.Pafumi@raveis.com



New For For A New Sch

WILBRAHAM HAMPDEN

Wilbraham-Hampden Rotary Club celebrates 50 years!



filled up quick to get a good helping of ice cream to celebrate National Sundaes Day at the Hampden Senior Center.



Wilbraham-Hampden Rotary Club President Peter Salerno addresses attendees during the rotary club's 50th anniversary celebration on July 24.



were all smiles as they enjoyed their sweet treats!



Submitted photos Don Flannery
Wilbraham-Hampden Rotary Club Secretary Brad Sperry shared the club's accomplishments during the 50th anniversary celebration.



Rotary District Governor Vin Marinaro, the special guest for the Wilbraham-Hampden Rotary Club's 50th anniversary celebration on July 24, congratulates the club for their accomplishments in the last 50 years.

The Wilbraham-Hampden Rotary Club celebrated its 50th anniversary on July 24 at La Cucina in Hampden, with Peter Salerno, the newest president of the

club, presiding. Rotary District Governor Vin Marinaro was also in attendance as a special guest and congratulated the club on their achievements.

AS A COMMUNITY SERVICE BY:



Heidi Pafumi

Realtor®



SLOPE to SHORE
A DIVISION OF TEAM413
MASSACHUSETTS | CONNECTICUT | VERMONT



LET'S GO OUT!

Your Local Favorite Restaurants



di Hampden House
 1 Allen Street, Hampden, MA
413-566-8324
OUR PATIO IS OPEN!
 Live Music Every Friday & Saturday!



Weather Permitting

BOOK YOUR NEXT FUNCTION WITH US!
 Showers, Christenings, Post-Funeral Luncheons,
 Rehearsal Dinners, Weddings, etc.
 For More Information
 Contact Lori Atkinson at 413-566-8324
 or by email at lacucinagreenhouse@gmail.com
 See our website for our Banquet & Catering Menu
lacucinahampden.com
 Mon.-Thurs. 3-9pm, Fri. & Sat. 11:30am-10pm & Sun. 11:30am-9pm
LOUNGE OPEN & PIZZA 7 DAYS BAR OPEN LATE!



CALL TODAY!
413-566-8015

COME DINE WITH US!
NEW! Dinners, Appetizers, Salads and Pizzas!

GIO'S LOUNGE
 Beer - Wine - Spirits - Cocktails

Let us do the cooking while you enjoy some summer fun!

Visit Our Website to Enroll In Our NEW CUSTOMER LOYALTY REWARDS PROGRAM!

9 Allen St., • Hampden Mini Mall • Hampden, MA (413) 566-8015
Open 5 Days | www.giospizzeria.com
 Closed Mon. & Tues.




Bar & Grille
 EST. 2016

LIVE MUSIC!
 Thursday 8/1 Joe Zabien
 Friday 8/2 Amanda Rowe
 Saturday 8/3 David Stolz
Meet up with friends at Route 20!

HAPPY HOUR THURSDAYS 4-7:30PM!
 Specially Priced Apps & Live Music

SUNDAY BRUNCH
Sundays 10:30-2:30
 (Plus Our Regular Menu Until 8pm)
 Featuring Our Build Your Own Bloody Mary & Mimosa Bar!

The Summer (July & August) \$29 LOBSTER CLAM BAKE IS BACK!
 Every Wednesday Night
 (Includes Lobster, Steamers and Corn on the Cob)

SUMMER STEAMERS
 Every Thursday Night
 (Both Specials Available While Supplies Last)

\$15 PRIME RIB NIGHT EVERY TUESDAY
 Dine In Only • While Supplies Last

\$17 STEAK N' BREW EVERY SUNDAY NIGHT!

SERVING LUNCH
 Thursday - Saturday 11:30am
 Sunday 10:30am

THE NEW OUTSIDE DECK IS NOW OPEN!

2341 Boston Rd., (Rt. 20), Wilbraham, MA
413.279.2020
route20barandgrille.com
 SERVING: TUES. & WED. 4-9PM
 THURS.-SAT. 11:30AM-9:30PM • SUN. 10:30AM-8PM
 WITH EXTENDED BAR HOURS EVERY NIGHT
 RESERVATIONS ACCEPTED FOR PARTIES OF 6 OR MORE



Advertise your restaurant, bar or brewery here!
 email: jwalker@turley.com
 call Jocelyn Walker: 283-8393





Erin Boughamer helps teenagers during the painting process for Paint Sip Fun on July 25.



Children start their paintings during the Paint, Sip, Fun event on July 25. The event was part of the Hampden Free Public Library's Summer Reading programming.



Various children express their creative side during Paint, Sip, Fun.



Children continue to paint across their canvases.



Various teenagers paint during the teen portion of Paint, Sip, Fun. Photos courtesy of Hampden Free Public Library

HAMPDEN from page 1

"I have always loved art, but through my business I get to help spread the joy of art to others. To see my students have fun creating something they have never done before makes my heart happy in a way nothing else can," Boughamer said.

On what she wanted attendees to take away from participating in the event, Boughamer said this.

"My mission is to educate, entertain, empower and inspire others through art. My only wish is for my students to leave my classes knowing they CAN paint and that painting is fun" Boughamer said. "I empower them during my classes and let them all know they are ALL artists! My hope is that they continue to be creative in whatever medium as I believe art is good for the soul!"

At the end of the day, each student of Miss B was very proud of what they had done and had a wonderful painting that they would be able to bring home with them.

Boughamer hopes attendees also felt empowered. "Over these last 11 years, I have found my favorite part of teaching a Paint Sip Fun class is seeing the skeptical and nervous student turn into a proud artist during our short time together. To see their confidence as an artist increase from 'I can't even draw a stick figure' when they walk into class, to proudly saying, 'I painted this!' as they walk out of my class two hours later," Boughamer said. "To have a small hand in the transformation of people's outlook toward their own creativity is incredible and keeps me doing what I love to do ... empower and inspire others to be creative."

The library will be holding their last event as part of their Summer Reading program, which is a finale party and dinner recognizing each child's reading accomplishments, on Aug. 1 at 5:30 p.m.

The Teen Summer Reading Party and the Adult Summer Reading Party, also, will take place at Noon on Aug. 3.

To learn more about Paint, Sip, Fun and their upcoming events, visit paintsipfun.com.



Erin Boughamer stands by the final product example of the children's painting, an adorable puppy.



Professional - Reliable - Fully Insured

Tree Trimming and Removal
 Emergency Tree Work • Stump Grinding
 Crane Service • Firewood Delivery

All Major Credit Cards Accepted
100% Financing Available

162 Sturbridge Road, Brimfield, MA 01010
508-641-5249 • office@robinsontreeservice.net
www.robinsontreeservice.net



Dr. Christopher J. Root
DMD MAGD



Dr. Mary Chalino
DMD

- Cosmetic & esthetic dentistry, whitening, veneers, crowns & bridges
- Implant Services
- Digital X-Rays & Photographs
- Evening appointments available
- Most insurance plans accepted
- CareCredit - A convenient monthly payment plan



Wilbraham Dental Associates, LLC

Our friendly team is proud to provide the highest quality of dental care utilizing the best new technology available.

Hours:
 Mon., Tues., Wed. 8-5
 Thurs. 12-8

**70 Post Office Park
 Suite 7006
 Wilbraham, MA 01095**

www.wilbrahamdentalassociates.com
413-279-2016

Cruisin' at the Club



Approximately 750 people attended Palmer Motorsports Cruise Night.



Jim Williams of Monson is shown with his 1960 Austin-Healey Sprite, which he has owned for 50 years.



Turley Photos by Paula Ouimette

Event benefited collector car education foundation

By Paula Ouimette
pouimette@turley.com

PALMER – Palmer Motorsports Park hosted the first of two cruise nights to benefit the Springfield to Boston Education Foundation last Wednesday.

Approximately 750 spectators came to view the hundreds of cars, trucks and motorcycles spanning the decades in a wide variety of makes and models.

Founder and Director of the Springfield to Boston Education Foundation, Jeff DeMarey, was joined by his son Chris and friend Ed Cenedella at the inaugural event. All proceeds from the cruise night will go to the foundation, which strives to inspire and educate students about all aspects of the collector car world through hands-on ex-

periences, events and STEM programs.

Sponsors for the cruise night include DeMarey's Wilbraham-based business, Stonewall Insurance Group, Inc., Palmer Motorsports Club, Fieldcrest Brewing Company, Batch Ice Cream, LUSO Federal Credit Union, Cupcakes & Confections by Jana, Classic Hits 97.7 FM and Hot Rod Doggs.

Spectators at the event were also able to enjoy a variety of food and beverage options at the cruise night, provided by the event sponsors.

Auto enthusiasts from around the region attended the cruise night, including a group of friends and car enthusiasts from Palmer.

Joey Brooks drove his 2009 Mitsubishi Galant, which he has owned for three years. Brooks said he hasn't brought the dark red car to a lot of events yet, but plans to in the future.

Dylan drove his 2014 Subaru BRZ, complete with a new air suspension system. Pinto is a frequent attendee at area car shows and cruise nights.

Joe Freniere drove his 2019 Ford Mustang GT, which he has owned for close to a year and has already attended a number of car shows with it. Warren resident Devon Kennedy showed up in his 2019 Dodge Challenger, which he has had for five years as of the 4th of July. "I go all over the country with it," Kennedy said of the car. Monson resident Jim Williams attended the cruise night with one of the more unique cars, a 1960 Austin-Healey Sprite. Williams bought the car in 1974, after selling his beloved racecar. "They were the cheapest car available in the U.S.," William said. Williams reminisced about driving around in the Sprite with his wife and two young daughters. The Sprite Mark 1 was manufactured from 1958 to 1960, the first production line unibody or "monocoque" style car. Its distinctive round headlights quickly lent it the nickname "Bugeye" in the U.S. and "Frogeye" in the U.K. Williams had his car fully restored using the expert skills of the Sprite specialist, the Bugeyeguy in Brandford, Connecticut. "This car I wanted to keep as original as possible," he said. Williams admitted that he never really liked the Sprite up until about four years ago, when he fell in love with it. He also owns a 2008 Mazda Miata, which he brought to the track for the Cars & Coffee "Miata Mania" event held the Sunday before the cruise night. Upcoming events at PMP The next Palmer Motorsports Cruise Night to benefit the Springfield to Boston Education Foundation will be held on Wednesday, Aug. 21 from 4-8 p.m. All cars are welcome. The club will also host Cars & Coffee on Sunday, Aug. 18 from 9 a.m.-noon featuring all Subaru vehicles, sponsored by Patrick Subaru; and Sunday, Aug. 25 featuring all Audi vehicles. Register for these events at palmermsp.com/carsandcoffee. Optional pace laps at Cars & Coffee events are \$35 for a 20-minute pace car controlled on-track session at noon. All participants will receive a Dunkin' gift card. For more information about Palmer Motorsports Park and upcoming events, follow them on Facebook or visit palmermotorsportspark.com.




• Overgrown property?
• Excavator Services • Extreme Brush Cutting!
• Shrub, Stump, Tree Removal • Lawn/Arborvitae Installed
• Loam, Stone, Mulch, Sand • Storm Clean-up • Small Demo • Insured

JOSH ROZELL 413.636.5957

Celebrating Our 25th Season of Dance!



The Dance Studio

Classes Start Sept. 9th!

REGISTER NOW FOR FALL CLASSES!

OPEN HOUSE Tuesday, September 3rd 5-7pm

In person registration every Tuesday 5-7pm

Family and Multi-class Discount

1 hour classes, 90 minute recitals

Professional Adult College Educated Instructors

Classes for Toddler through Adult

Classical Ballet, Jazz, Tap, Musical Theater Dance, Modern/Contemporary, Pre-dance, Ballet Fairy Tales, Combo Classes, Street Hip-Hop, Break Dance and Funk, Competition & Performance Team

Toddler Class



Adult Fitness & Dance Classes as low as \$5 per class when you pre-register monthly or \$10 for drop-ins

SPECIALIZING IN EARLY CHILDHOOD DANCE

35 Post Office Park, Wilbraham 596-0121 • REGISTER ONLINE! www.thedancestudio.co

RTNC AUTOWASH

"Come shine with us"

UNDER NEW OWNERSHIP LOCAL FAMILY BUSINESS

919 Meadow St., Chicopee
200 St. James Ave., Chicopee
410 Cooley St., Springfield

SPORTS

A TURLEY PUBLICATION | www.turley.com

SEND US YOUR SPORTS SUBMISSIONS

www.sports.turley.com

Wilbraham B makes playoffs



Lillian Sergienko sizes up a header.



Annabella Cianflone makes a throw-in.

WILBRAHAM – Despite suffering a loss in their regular season finale, Wilbraham B found itself in the No. 3 position in the B Division for the girls playoffs. The Falcons went 6-3-2 overall for 20 points. Wilbraham was scheduled to host Agawam in the quarterfinals.

Brooke Germain goes after the loose ball.



Alexandra Jaslanek watches her way pass head away.

Turley photos by David Henry www.sweetdogphotos.com



Geoffrey Ohemeng looks to make a pass.



Tyler Supczak sends a pass away.



Turley photos by David Henry www.sweetdogphotos.com
Jack Paterno heads up the sideline.



Geoffrey Ohemeng sprints up the field with possession.

Falcons looks for summer title

WILBRAHAM – The Wilbraham Boys B summer soccer team made the B Division playoffs. The Falcons finished No. 6 in

the division with a 6-5 record overall. The Falcons were scheduled to face South Hadley in the quarterfinals Tuesday evening.

Pioneers defeated in second round of playoffs



Leonel Vergara makes a throw-in.



Kwame Adu-Gyamfi tries to keep the ball from going over the sideline.



Lawrence Goddard sends a shot on goal.



Turley photos by David Henry www.sweetdogphotos.com
Aiden Kelly goes for a long pass.

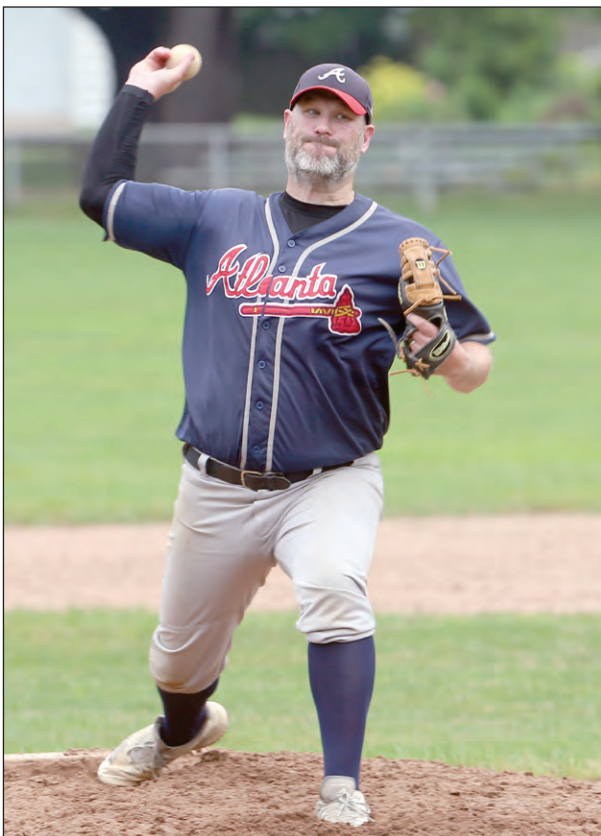
LUDLOW – After a phenomenal season, the Western Mass. Pioneers were defeated for just the third time this season. The Pioneers lost 2-1 against Lionsbridge FC on the road. The Pioneers opened up the playoffs with a 3-1 win against FC Motown. The Pioneers season ends at 13-3-1.



Turley photos by David Henry www.sweetdogphotos.com
The Tigers' Brad Bullough delivers a pitch.



The Braves Jamie Ryan throws to first.



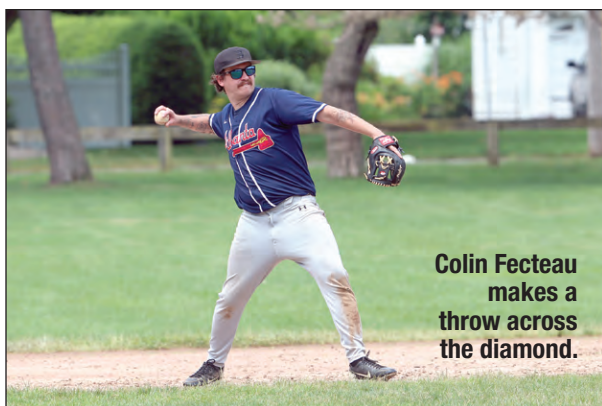
Adam Kinney, of Wilbraham, delivers a pitch for the Braves.



Randy Marseau fields a grounder for the Tigers.



Justin Morin fields the bounce to third.



Colin Fecteau makes a throw across the diamond.

Big inning leads Blue Sox to win

HOLYOKE– After the Blue Sox took both games of Saturday's double-header, they were hungry for more against the Westerners on Sunday afternoon.

Valley capitalized on an eight-run seventh inning to win Sunday's game 13-5. The Blue Sox continue to cushion their lead of the eighth seed in the NECBL playoff picture.

Danbury starter Alex Mach struggled early and gave up four runs in the bottom of the second inning. Blue Sox designated hitter Jay Bant hit his third home run of the season. Two of those runs were scored as unearned as Danbury made two errors (one on catcher Roman DiGiacomo and second baseman Carl Schmidt). After two innings, it was 4-0 Valley.

Danbury chipped its way back into the game, scoring one run in the third, fourth and fifth innings. In the top of the sixth inning, Danbury left fielder Jaden Sheffield, son of Major League Baseball superstar Gary Sheffield, struck out looking and was ejected by home plate umpire David Speranza.

Going into the top of the seventh inning, Valley had the 4-3 lead. KJ Lavoie surrendered singles to Kobe Mentzer and Lorenzo Rios. Danbury took a 5-4 lead going to the bottom of the inning.

Mach entered the bottom of the inning and was taken out after immediately loading the bases on an E4, walk and single. Max Foster entered the game and got two quick groundouts.

Jonathan Hogart and Bant singled in runners. Anthony Scarabino walked and Zev Moore also singled in runners. Kyle Henington capitalized the eight-run seventh inning to make it 12-5. Valley tacked one more in the bottom of the eighth and won 13-5

Quabbin League seeking to start fall league

The Quabbin Valley Over-28 Baseball League is looking to start an eight-game fall program for the over-28 population. The league, which plays a spring/summer regular season with six teams for 15 games followed by playoffs, is hoping to continue the fun into the fall with a short eight-game schedule for interested players.

Preliminary details are still being worked on, but the league is looking to have four teams with six "reg-

Quabbin regular season nearing end

WEST SPRINGFIELD – The Quabbin Valley Over-28 Baseball League continues Sunday morning action into August with just three more games remaining in its regular season. So far, the Orioles are at the top of the league followed by the Tigers in second place. The Quabbin League playoffs will follow, and this year, the league will be hosting a fall league for players 28 and over.

Hopkins takes win in Calef 125

WALPOLE, N.H. - A busy stretch of four races in four weeks for the Granite State Pro Stock Series wraps up this Friday night at one of the series' staple venues.

Lee USA Speedway, only a short drive from the New Hampshire seacoast, welcomes the GSPSS back for their first of two visits this year with this Friday's Clash on Calef 125.

Unique among the tracks on this year's GSPSS itinerary, Lee hosts its own regular Pro Stock division, welcoming the class back to its weekly program a few years ago. Lee's own big-ticket Pro Stock shows earlier this year boasted plenty of names familiar to GSPSS fans and followers. But Friday night's showdown, named for the state highway on which Lee has been situated since the 1960s, is the first opportunity for those Pro Stock wheelmen to score points toward the series crown.

That contest took an intriguing turn Saturday evening at Speedway 95, with hometown hero Mike Hopkins the fifth different driver to wave the GSPSS checkered flag this season. The two strongest title threats in attendance, Casey Call and Evan Beaulieu, each faced their own pitfalls in the race. But where Call exited early with chassis damage, Beaulieu recovered from a mid-race spin to finish fifth, chipping away at Call's healthy advantage.

Call's calamity ended a season-opening streak of finishing no worse than fourth, while Beaulieu has back-to-back top-fives after a slow start. Both drivers have a lot of work ahead to be ready for Friday, and with the season's deepest entry list in hand, winning promises to be a tall order.

A trio of Maine rookies have run the majority of the races this year, with Jamie Wright, Morgan Call and Miller Buzzell all set to carry on their season-long efforts at Lee. Joining them from the Pine Tree State is veteran Gary Smith and multi-track titlist Dave Farrington, Jr., who won his GSPSS debut back in 2016.

Wiscasset Speedway veteran and 2023 Speedway 95 winner Josh St. Clair is on the entry list, as well as Nick Jenkins and Matt Dow. Cole Robie, who hails from Maine, but has Granite State ties through his father Jarod and grandfather Carleton, plans to make his series debut as he graduates from Legends and Bandoleros into full-size fendered cars this season.

Local racers Bobby Baillargeon, Bobby Frappier and Frankie Eldredge plan to put their Lee expertise to the test. Dan Winter has stepped up his GSPSS appearances this year and wants to replicate his top-five run at Star Speedway in May's season opener. Andy Shaw missed the season opener, but he and the Dale Drew Racing team have been at every event since.

Massachusetts teammates Alex Quarterley and Jeremy Sorel are back for more GSPSS action, with Sorel still smiling

after his second-place finish at Claremont Motorsports Park earlier this month.

Cory Casagrande is back after a week off, with the Connecticut star anxious to avenge a hard crash at Lee a month ago. Fellow Nutmeg Stater Anthony Bello is back with the series as well, racing for Maine car owner Shawn Knight.

With big-league racing on a summer recess, Maine native and NASCAR spotter Derek Kneeland is dusting off his race car for his first GSPSS start since 2022. Kneeland accompanied his driver, Kyle Busch, to June's Keen Parts 150 at Lee, where he and Busch both outlasted the carnage to post top-five finishes.

But the early favorites are sure to be those who have a record of past success at Lee. Ryan Green's redemption arc remains in play after a grinding crash at June sidelined his own race car. Green borrowed a car from friend Joey Doiron to race at Claremont this month, reintroduced his repaired mount at Hudson two weeks ago, and will be a threat in whichever car he brings to the track this week.

Brandon Barker, the first Pro Stock champion at Lee after the division's revival a couple years back, won the Keen Parts 150 in June and took home a \$10,000 prize. Barker has a pair of GSPSS wins at Lee in 2018 and 2019 and would love to add to the trophy case.

Reigning Lee track champion Wayne Helliwell, Jr. last won a GSPSS feature in 2014, a dry spell the New Hampshire all-star would love to erase. Helliwell's longtime rival, Joey Polewarczyk, won a GSPSS feature at Lee that season, one of two touring wins at the track. "Joey Pole" was victorious at Hudson Speedway two weeks ago, his eighth series victory.

And Corey Bubar won the GSPSS' last outing at Lee, taking home \$8,500 in last fall's Bosowski Properties 150. The Beech Ridge Motor Speedway veteran is one of several racers who came to Lee after Beech Ridge was shuttered, and one of many to find success at his new home track.

In a showdown between the proven veterans and the optimistic hopefuls, the sure winners are the fans in the stands who can take in Friday night's on-track fireworks.

QUABBIN from page 16

ular season" games followed by a semifinal in the seventh week, and a final/consolation game in the eighth week.

The league will be a bit more informal than the regular spring/summer league with the goal being for players to have fun playing more baseball, work on field and batting skills through more innings in the field and extra at-bats, or potentially working on or trying out pitching.

As has been traditional in other fall leagues, the Quabbin League will likely be wood-bat only for the fall.

There is an interest form and survey interested players can fill out at www.quabbinvalleybaseball.org. The league is open to all current Quabbin league players as well as players from other leagues who are age 28 and over during the calendar year of 2024.

The league will look to keep the cost very low for the league with preliminary indications having the league in the \$40-50 range to play eight games.

Games will likely be held in the West Springfield, Agawam, Southwick area and are likely to be held on Sunday mornings, though a few games may be held at alternate times. Games are scheduled to begin in September after Labor Day.

This Week in Rec

Bryan Litz, Director

WILBRAHAM - What a long journey it has been. You may wonder what it is I am referring to, outdoor



pickleball courts in the Town of Wilbraham. Going all the way back to 2021 was our first time dipping our toes into the pickleball phenomena. We were approached by a handful of residents about

building outdoor pickleball courts in Wilbraham. After further research, it was determined that many Wilbraham residents had taken up the sport and were playing rather frequently at some of the neighboring communities' outdoor courts.

So, we set out and submitted a Community Preservation Application (CPA) in January 2021. With the support of the community, we were successful in our application, and received approval to move forward with pickleball courts at the Wilbraham Soccer Complex. Just as we were about to break ground, we

hit a couple speed bumps and had to go back to the drawing board. The delay pushed us back to 2023, and in January 2023, we submitted a second CPA application. This second appli-

cation received approval in May 2023, and the Recreation Commission chose the Memorial School complex as the site of the pickleball courts.

After a couple more hiccups along the way, we

finally have a signed contract with a contractor, and are moving forward with construction! It has taken much longer than expected, but in the end, it will all be worth it. Coming soon to Wilbraham six pickleball courts located at the Memorial School grounds.

These nice new outdoor courts we are sure will get lots of play, and we are very thankful for all the support from the community!

NOTE: For more information on all of our youth programs and adult pickleball, please visit Wilbraham-Rec.com.

support local community journalism

NOW ACCEPTING MASS HEALTH FOR CHILDREN AND HARVARD PILGRIM DENTAL INSURANCE

Discover comprehensive dental care for the whole family in a fun and friendly environment at Palmer Smiles. Your smile is our priority!

- Expert Pediatric Dental Care
- Restorative Dentistry Veneers
- Implants Surgical extractions
- TMJ disorders management
- Sleep Dentistry
- Crowns in 2 days
- Invisalign

Book Now!

413-283-6182
admin@palmersmiles.org
www.palmersmiles.org

2025 Main St, Three Rivers, MA 01080

Classifieds

12 WEEKLY NEWSPAPERS | SERVING 50 LOCAL COMMUNITIES

A TURLEY PUBLICATION | www.turley.com

COMMUNITY MARKETPLACE

Call us at 413.283.8393

FOR SALE

MAXIMUM EFFICIENCY. EXTRAORDINARY performance. Central Boiler certified Classic Edge Titanium HDX OUTDOOR WOOD FURNACE. Call today **413-296-4320**.

FIREWOOD

BUNDLES - KILN DRIED FIREWOOD

Only \$5 per bundle!
Pick up at **Kibbe's Firewood**
229 Somers Rd,
Hampden MA 01036

FIREWOOD

Fresh cut & split \$200.00
Seasoned cut & split \$300.00
All hardwood.
Tree length available

*Also have seasoned softwood for outdoor boilers (Cheap). Quality & volumes **guaranteed!!** New England Forest Products **(413)477-0083**

MORE HEAT LESS WOOD. Central Boiler Classic Edge HDX Outdoor Wood Furnace. EPA Certified. Titanium Stainless Steel. 26% Tax Credit. Call **(508)882-0178**

MISCELLANEOUS

FOR SALE

- 14' step ladder
 - Radial arm table saw
 - Hydraulic conduit benders
 - Portable grinders 7" & 12"
 - Wire pullers
 - Assorted Knock out Punches
- 413-658-8535/413-967-5065**

MISCELLANEOUS ITEMS, all in good condition. Steins, pottery, furniture. Something for everyone in the family. **413-786-4203**

FOR SALE

RED BRIDGE BAIT

1129 East St., Ludlow
Shiners, worms, tackle.
Beer and ice.
Hours: Wed.-Thurs. 7am-3pm;
Fri. 7am-5pm; Sat. 6am-3pm;
Sun. 6am-1pm.
Closed Mon.-Tues.
413-589-7957

TAG SALE

PINE VALLEY ANNUAL TAG SALE: SATURDAY, July 13, 8-3. 281 Chauncey Walker St., Belchertown. - Dozens of tag sales throughout our community. Welcome station with maps, burgers/dogs/snacks/cold drinks. Restrooms. Huge variety of items!

WANTED

OLD CARPENTER TOOLS wanted. Planes, chisels, axes, etc. Vintage hunting, camping, cast iron cookware, advertising, motorcycles, clothing. Call Ken **(413)433-2195**.

WANTED TO BUY

ANTIQUES AND OLD STUFF WANTED.

BUYING Bottles, Cocks, Jugs, Pottery, Costume Jewelry, Toys, Games, coins, sterling, Glassware, Silver-plated items, watches, Musical instruments, typewriters, sewing machines, tools, radios, clocks, lanterns, lamps, kitchenware, cookware, knives, military, automotive, fire department, masonic, license plates, beer-cans, barware, books, oil cans, advertising tins, hunting, fishing, signs, and more Donald Roy **(860) 874-8396**

WANTED

Buy, Sell & Trade Video Games

Retro World
413-301-5020 M-S 11-7
187 Main St.
Indian Orchard, MA

SEEKING:

Tobacco Cans & Tins
We are also looking for any advertisement signs and tins (mostly beer & alcohol related), cigar boxes, brass figures, beer trays, beer taps. Ect. Please don't hesitate to reach out. We pay cash.

Email, call or text:
teestresures413@gmail.com
Marty **413-374-7388**


JUNK REMOVAL

ARA JUNK FURNITURE REMOVAL

Full house cleanouts, attics, basements, garages, pools, hot tubs, sheds, decks. Same day service. 8am-9pm. Credit cards accepted. Free estimates on phone.
Call Pete 413-433-0356.

A Call We Haul FAST REMOVAL

Junk, Appliance, Cleanouts.
We load it & take it.
413-531-1936
CREDIT CARDS ACCEPTED

You will find, mystical success...

In the **CLASSIFIEDS!**

SERVICES



2*****A & B HOUSEHOLD REMOVAL SERVICE*****

Cellars, attics, garages cleaned, yard debris. Barns & sheds demolished. Swimming pools removed. Cheaper than dumpster fees and we do all the work. Lowest rates. Fully insured. **(413)283-6512, cell (413)222-8868.**

CHAIR SEAT WEAVING & refinishing - cane, fiber rush & splint - Classroom instructor, 20+ years experience. Call Walt at **(413)289-6670** for estimate.

DRYWALL AND CEILINGS, plaster repair. Drywall hanging. Taping & complete finishing. All ceiling textures. Fully insured. Jason at Great Walls. **(413)563-0487**

CLEANING SERVICES

CARPET CLEANING steam method starting at \$89 per room. Stain and odor removal. Quotes available. Call Superior Floor Solutions, **413-323-4760.**

ELECTRICIAN

NEED AN ELECTRICIAN?

Look no further!
PJ's Electrical offers fast and reliable electrical services for your home or business. Call now for a FREE estimate!
(413) 366-1703
LICENSED & INSURED

SERVICES

ZEN ELECTRIC COMPANY LLC Fully licensed and insured; Master Electrician on staff. Call for all your electrical needs. No job too small. Senior citizen and Veteran Discount. A veteran owned company. MA License #8101A1. Call John at **(413)206-6509**

EXCAVATING

COMPLETE SITE WORK. Residential and commercial. Specializing in Title 5 septic repair and installation. **Lussier Excavating, 774-696-1292. email: gigluss@mail.com**

HOME IMPROVEMENT

HOME IMPROVEMENT SPECIALIST

Decks, porches, repair service, roofing and siding contractor. Tim **413-563-2229**. Licensed/insured. 35 year construction supervisor.

HOME IMPROVEMENTS. REMODELING Kitchens, baths. Ceramic tile, windows, painting, wallpapering, siding, decks. Insurance work. Fully insured. Free estimates. **(413)246-2783 Ron.**

HOME REPAIR & REMODELING for all your interior & exterior needs. Carpentry, woodworking, porches, patios, windows, doors, painting, drywall, siding, landscaping, clean-outs. Competitive pricing, references, licensed and insured. Please call Brendan **(413) 687-5552**

CLASSIFIED DEADLINES

MONDAY AT NOON

SERVICES

LANDSCAPING

A+ ROZELL'S LANDSCAPING & BOBCAT SERVICE

Excavator Services
Overgrown property?
Extreme Brush Cutting!
Shrub, Stump, Tree Removal
Lawn/Arborvite Installed
Loam, Stone, Mulch, Sand
Storm Clean-up
Small Demolition/Junk Removal
Insured
Josh Rozell 413-636-5957

****ALL SEASON**** Specializing in shrub trimming, pruning, design, deliveries, loader, backhoe, insured. Professional. Please call Bob **(413)537-5789 (413)538-7954.**

MATT GUERTIN LANDSCAPING

Serving Wilbraham & Ludlow
Weekly lawn care
Landscape design and installation
Hedge trimming/mulching
Custom edging/stone work
For more services visit
mattguertinlandscaping.com
Call or text **413-266-9975**
Insured - Commercial - Residential

MASONRY

STOP WET BASEMENTS

ABC MASONRY & BASEMENT WATERPROOFING
All brick, block, stone, concrete. Hatchway doors, basement windows, chimneys rebuilt & repaired, foundations repaired, basement waterproofing systems, sump pumps. BBB+ rating. Free estimates. Lic #14790. Call **(413)569-1611, (413)374-5377**

PAINTING

DUTCH TOUCH PAINTING
Interior only \$199.00 for average 12x16 room. Very neat, references, prompt service call **(508)867-2550**

PAVING

STANLEY AND SONS PAVING. Driveways, parking lots, roadways, third generation of quality. Fully insured, free estimates, senior discount, BBB accredited. Call Rich **413-246-7999.**

PLUMBING

GREG LAFOUNTAIN PLUMBING & HEATING Lic #19196 Repairs & Replacement of fixtures, water heater installations, steam/HW boiler replacement. Kitchen & Bath remodeling. 30 years experience. Fully insured. \$10 Gift Card With Work Performed. Call Greg **(413) 592-1505.**

RUBBISH REMOVAL

BOB ROBILLARD'S RUBBISH REMOVAL Attics, Cellars, Garages cleaned, Pools/Hot Tubs Removed. Family owned/operated since 1950 **(413)537-5090.**

TREE WORK

DL & G TREE SERVICE. Everything from tree pruning, tree removal, stump grinding, storm damage and brush chipping. Honest and Dependable. Fully insured. Now offering a Senior Citizen and Veteran discount. Call today for free estimate **(413)478-4212.**

Residential/Commercial Tree Services

Locally owned and fully insured
Call anytime **(413) 813-5778**
Neilsen's ATM - Ron Neilsen

FILL OUT AND MAIL THIS MONEY MAKER

MAIL TO: Classifieds, 24 Water St., Palmer, MA 01069
or call: 413-283-8393

DEADLINES: MONDAY AT NOON

CATEGORY:			
1	2	3	4
5	6	7	8
9	10	11	12
13	14	15	16
17	18	19	20 Base Price \$26.00
21 Base Price \$26.50	22 Base Price \$27.00	23 Base Price \$27.50	24 Base Price \$28.00
25 Base Price \$28.50	26 Base Price \$29.00	27 Base Price \$29.50	28 Base Price \$30.00
29 Base Price \$30.50	30 Base Price \$31.00	31 Base Price \$31.50	32 Base Price \$32.00
33 Base Price \$32.50	34 Base Price \$33.00	35 Base Price \$33.50	36 Base Price \$34.00
37 Base Price \$34.50	38 Base Price \$35.00	39 Base Price \$35.50	40 Base Price \$36.00

Name: _____ Phone: _____
 Address: _____
 Town: _____ State: _____ Zip: _____
 Number of Weeks: _____ X per week rate = \$ _____
 Credit Card: MasterCard VISA Discover Cash Check# _____
 Card #: _____ Exp. Date _____ CVV _____
 Amount of charge: _____ Date: _____

Quabbin Village Hills
Circulation: 50,500

Hilltowns
Circulation: 9,800

Suburban Residential
Circulation: 59,000

All Three ZONES for \$26.00 for 20 words plus 50¢ for each additional word.

GREAT VALUE!

ALL 3 ZONES NOW FOR THE PRICE OF ONE!

OUR CLASSIFIEDS REACH 50 COMMUNITIES EVERY WEEK!

PUBLIC NOTICES

WILBRAHAM PLANNING BOARD

The Wilbraham Planning Board will hold a Public Hearing on **Wednesday, August 14, 2024, at 5:45 PM** in the Town Office Building, 240 Springfield Street, on the application of Roger L. Chapdelaine for a Special Permit to exceed the size limitations in Sections 3.9.2.2 and 4.4.8 of the Wilbraham Zoning By-Law to allow the construction of a 3,000 square foot detached accessory building (barn) with a building height in excess of 20 feet and for a Special Permit as required under Section 4.10 of the Wilbraham Zoning By-Law to allow construction of a 702 square foot accessory apartment as part of a proposed single family home on property owned by Catherine Jurgens located at 10V Federal Lane as shown on plans on file in the Planning Office and posted for public viewing on the Planning Board page of the Town of Wilbraham website at www.wilbraham-ma.gov/123/Planning-Board. Both in person and virtual participation are available. To participate virtually go to <https://meet.goto.com/736312389> or call 866-899-4679 (Access Code: 736-312-389). 07/25, 08/01/2024

Town of Hampden Notice of Public Hearing

The Hampden Planning Board will hold a Public Hearing on **Wednesday, August 14, 2024, at 6 PM** in the Town House, 625 Main Street, Hampden, MA on the application of Daniel Budrow for a Special Permit under Section 6.1, 6.11 (1) of the Hampden Zoning Bylaw

to allow the construction of a private garage which exceeds, in aggregate area, a square footage which is more than one half (1/2) the ground floor area of the main dwelling including any attached garage, at the Budrow residence located at 75 South Road.

Information related to this application is on file in the Town Clerk's Office and is available for review by the public during normal business hours.

For the Board,
Madison Pixley, Chair
Hampden Planning Board
07/25, 08/01/2024

Town of Hampden Notice of Public Hearing

The Hampden Planning Board will hold a Public Hearing on **Wednesday, August 14, 2024, at 6:40 PM** in the Town House, 625 Main Street, Hampden, MA to Amend the Town of Hampden Zoning Bylaw to establish a temporary 6-month moratorium on the construction and operation of Battery Energy Storage Systems (BESS).

Information related to this application is on file in the Town Clerk's Office and is available for review by the public during normal business hours.

For the Board,
Madison Pixley, Chair
Hampden Planning Board
07/25, 08/01/2024

Commonwealth of Massachusetts The Trial Court Probate and Family Court Hampden Probate and Family Court 50 State Street

Springfield, MA 01103 (413)748-7758 Docket No. HD24P1550EA Estate of: Jane A Ely Date of Death: 02/01/2024 CITATION ON PETITION FOR FORMAL ADJUDICATION

To all interested persons: A Petition for Formal Probate of Will with Appointment of Personal Representative has been filed by Laurie J Bongiorno of Wilbraham MA requesting that the Court enter a formal Decree and Order and for such other relief as requested in the Petition.

The Petitioner requests that: Laurie J Bongiorno of Wilbraham MA be appointed as Personal Representative(s) of said estate to serve Without Surety on the bond in unsupervised administration.

IMPORTANT NOTICE
You have the right to obtain a copy of the Petition from the Petitioner or at the Court. You have a right to object to this proceeding. To do so, you or your attorney must file a written appearance and objection at this Court before: 10:00 a.m. on the return day of 08/28/2024. This is NOT a hearing date, but a deadline by which you must file a written appearance and objection if you object to this proceeding. If you fail to file a timely written appearance and objection followed by an affidavit of objections within thirty (30) days of the return day, action may be taken without further notice to you.

UNSUPERVISED ADMINISTRATION UNDER THE MASSACHUSETTS

UNIFORM PROBATE CODE (MUPC)

A Personal Representative appointed under the MUPC in an unsupervised administration is not required to file an inventory or annual accounts with the Court. Persons interested in the estate are entitled to notice regarding the administration directly from the Personal Representative and may petition the Court in any matter relating to the estate, including the distribution of assets and expenses of administration

WITNESS, Hon. Barbara M Hyland, First Justice of this Court. Date: July 24, 2024
Rosemary A Saccomani, Register of Probate 08/01/2024

Commonwealth of Massachusetts The Trial Court Probate and Family Court Hampden Probate and Family Court 50 State Street Springfield MA, 01103 Docket No. HD12P2320GD
In the interests of: Ralph R Presinger Of: Wilbraham, MA
RESPONDENT Incapacitated Person/ Protected Person CITATION GIVING NOTICE OF PETITION TO EXPAND THE POWERS OF A GUARDIAN

To the named Respondent and all other interested persons, a petition has been filed by Richard S Pelosi of Amherst, MA in the above captioned matter requesting that the court: Expand the powers of a Guardian of the Respondent.

The petition asks the court to make a determination that the powers of the Guardian and/or Conservator should be expanded, modified, or limited since the time of the appointment. The original petition is on file with the court.

You have the right to object to this proceeding. If you wish to do so, you or your attorney must file a written appearance at this court on or before 10:00 a.m. on the return date of 08/16/2024. This day is NOT a hearing date, but a deadline date by which you have to file the written appearance if you object to the petition. If you fail to file the written appearance by the return date, action may be taken in this matter without further notice to you. In addition to filing the written appearance, you or your attorney must file a written affidavit stating the specific facts and grounds of your objection within 30 days after the return date.

IMPORTANT NOTICE
The outcome of this proceeding may limit or completely take away the above-named person's right to make decisions about personal affairs or both. The above-named person has the right to ask for a lawyer. Anyone may make this request on behalf of the above-named person. If the above-named person cannot afford a lawyer, one may be appointed at State expense.

WITNESS, Hon. Barbara M. Hyland, First Justice of this Court. Date: July 19, 2024
Rosemary A. Saccomani Register of Probate 08/01/2024

PUBLIC NOTICE
This ad is pursuant to MA Gen. Law Ch.255, Sec. 39A as of August 2, 2024 the following motor vehicle will be for sale to satisfy a garage keepers lien:

2004 Hyundai Santa FE
VIN: KM8SB12BX4U820443
COLOR: White
LKO: Robin Leuthner
18 Turners Falls Rd., Apt. A
Turners Falls MA 01376
R & S Assoc. Inc
PO Box 543
Wilbraham MA 01095
413-596-4374
07/18, 07/25, 08/01/2024

Town of Hampden Notice of Public Hearing

The Hampden Planning Board will hold a Public Hearing on **Wednesday, August 14, 2024, at 6:20 PM** in the Town House, 625 Main Street, Hampden, MA to Amend the Zoning Bylaw of the Town by substituting the term "Select Board" for "Board of Selectmen" and then "Select Board Members" for the word "Selectmen" in each and every place either one appears in the Zoning Bylaws and the Subdivision Rules and Regulations.

Information related to this application is on file in the Town Clerk's Office and is available for review by the public during normal business hours.

For the Board,
Madison Pixley, Chair
Hampden Planning Board
07/25, 08/01/2024

Classifieds

12 WEEKLY NEWSPAPERS | SERVING 50 LOCAL COMMUNITIES

A TURLEY PUBLICATION | www.turley.com

COMMUNITY MARKETPLACE

Call us at 413.283.8393

SERVICES
TUNE-UPS
LAWNMOWER TUNE UP & REPAIR
A&M TUNE-UPS
Push Lawnmowers, Riding Mowers and Small Engine Repair.
Work done at your home.
FREE PICKUP OF UNWANTED LAWN EQUIPMENT
Call Mike (413) 348-7967

STUMP GRINDING
DL & G STUMP GRINDING Grinding stumps of all sizes, insured & certified. Senior discounts. Call Dave 413-478-4212



SAW Stump Grinding
Call for a Free Estimate, Veteran Owned, Fully Insured
WWW.SAWSTUMPGRINDING.COM
413-213-5470

AUTO
CASH FOR JUNK AND REPAIRABLE CARS
FREE TOWING FAST SERVICE CASH PAID AS IS
CALL OR TEXT 413-219-6839

PETS
FREE SHORKIE MULTI-POO PUPPIES. Very cute, serious inquiries only. Text or call 413-687-0530.

HELP WANTED
ASSISTANT MECHANIC
The Assistant Mechanic, works under the Mechanic to repair and maintain a wide variety of mechanical equipment throughout the company. Skills needed (but are not limited to): Air brake knowledge, hydraulic knowledge, small engine repairs, welding, and fabricating (body work skills a plus). Must own your own tools. CDL a plus but not required; Self-motivated, committed only need apply. Background checks, driver records and drug testing required. This is a full time position. Email resume and interest to admin@jrsweeping.com or call 413-786-2168.

HELP WANTED
TOWN OF WILBRAHAM
EMERGENCY DISPATCHER - P/T & F/T PUBLIC SAFETY NETWORK SYSTEMS ANALYST RECYCLING ATTENDANT - P/T
The Town of Wilbraham is looking to fill several vacancies. For application and more information please visit www.wilbraham-ma.gov. EOE

VACUUM SWEEPER OPERATOR
3rd shift sweeper operator - operate vacuum sweeper at various route sites. Experience preferred but not required. No CDL required. MUST obtain a DOT card and have a clean driving record and be dependable. Will train qualified applicants. Email resume and interest to admin@jrsweeping.com or call 413-786-2168.

REAL ESTATE
LAND FOR SALE
HAMILTON LAKE, HOLLAND, MA. Small private surveyed 41 ft. waterfront lot with boat launch. Dock and picnic table area. Quiet dead end Brandon St. Unused swimming ROW. **Jim 508-868-6157, Peg 508-723-3433.** \$25,000. Taxes \$224 year.

CLASSIFIED DEADLINES
MONDAY AT NOON

REAL ESTATE
FOR RENT

EQUAL HOUSING OPPORTUNITY

ALL REAL ESTATE advertised herein is subject to the Federal Fair Housing Act, which makes it illegal to advertise "any preference, limitation, or discrimination because of race, color, religion, sex, handicap, familial status, or national origin, or intention to make any such preference, limitation, or discrimination." We will not knowingly accept any advertising for real estate which is in violation of the law. All persons are hereby informed that all dwellings advertised are available on an equal opportunity basis.

OFFICE FOR RENT: Montgomery Market Place, 46 Main Rd., Montgomery. Lovely & spacious, \$450/mo. Includes utilities. Call 413-977-6277.



Post your job openings in our classifieds.
WE GET RESULTS!

\$12.50 Each Digital Photos
TURLEY PUBLICATIONS, INC.
Purchase a photo that recently ran in one of our publications. Go to newspapers.turley.com/photo-request

Whether you're buying or selling,...



it's a **WIN! WIN!**
in the **CLASSIFIEDS!**
413.283.8393 • classifieds@turley.com
24 Water St., Palmer • 80 Main St., Ware

Rotary Club celebrates 50th Anniversary



Legislative Aid Cherie McBride, representing state Rep. Angelo Puppolo, presented a certificate from the State to club President Peter Salerno congratulating the Rotary Club on its 50 years of service to the community.



Rotary Officers for the Rotary 2040-2025 year. Top from left: President Peter Salerno, Vice President Ann Marie Ottoson. Bottom, Treasurer Diane Ryan, Brad Sperry.

HAMPDEN - The Wilbraham-Hampden Rotary Club celebrated their 50th anniversary Wednesday, July 24 at a dinner at La Cucina in Hampden. The event was presided over by new club president Peter Salerno.

The Rotary Club uses as its motto "Service Above Self" and Salerno said they have been working towards that goal for the last 50 years.

The Rotary District Governor Vin Marinaro was a guest at the dinner and congratulated the club on its achievements in Wilbraham and Hampden over the years.

Club Secretary Brad Sperry briefed the members about the accomplishments that the club has achieved this Rotary Year. They include:

Administration of a District Grant providing hygiene items, blankets, sheets and towels for homeless individuals and families.

Donated dictionaries to every third-grade student in the Hampden-Wilbraham Regional School District.

Sponsored the Town of Wilbraham's annual Christmas Tree Lighting.

Supported a Clean Water and Sanitation Project in Guatemala in partnership with several other Rotary clubs in North and Central America.

Donated a contribution to the Friends of Wilbraham Seniors for the new Town of Wilbraham Senior Center.

Partnered with Minnechaug Regional High School students to maintain the playscape at Memorial Park in Hampden on the "Rotary Day of Service".

Sponsored three Rotary Youth Leadership Awards for local high school sophomores so they could participate in a youth leadership development course at Springfield College.

Awarded ten \$1,500 scholarships to local high school seniors.

Delivered Meals on Wheels to Seniors the last weekend of every month.

Delivered bread and other baked goods donated to the Big Y on Boston Road to the Community Survival Center three days a week.

Served dinner at the Friends of the Homeless in Springfield once a month.

Sponsored a public Information Forum with Supt. Of Schools John Provost.

Met the club's goal for donations to the Rotary Foundation Annual Fund by donating \$1,160.

The club holds regular dinner meetings twice a month at the Country Club of Wilbraham with monthly guest speakers. Membership is open to the community. For more information or to join the club contact Brad Sperry at 413-537-4171.

EVENTS from page 9

Interested participants can sign up with Young Adult Librarian Maxine Girard during the Summer Reading Kickoff event on June 22 in the Sheila R. Flynn Teen Center or sign up online at tinyurl.com/HPLTeen2024 and visit the library for a reading log.

For every hour you read or listen to a book, complete one line on your reading log. For every five reading hours completed, have a library staff member initial your reading log and receive a raffle ticket for one of the raffle baskets.

Teens who read 20+ hours by Aug. 1 will also be entered to receive a \$100 Barnes & Noble gift card.

The last day to enter raffle tickets is Thursday, Aug. 1.

Raffle prize winners will be announced during the Teen Finale Party on Saturday, Aug. 3 at Noon. To learn more, email Maxine at mgirard@cwmar.org.

Support Neurological Research at the Trot for Tom Run/Walk

WILBRAHAM - Registration is now open for the first and only Trot for Tom run/walk. Happening on Sept. 14 at Minnechaug Regional High School, the event features a 5K run or 1-mile walk honoring Dr. Thomas "Tom" Julian. Known for his curiosity and love of learning, Tom's career as a scientific researcher and academic was cut short, but his impact on those around him was undeniable.

The Trot for Tom event aims to continue his mission, raising funds for neurological disease research.

Lace-up your shoes and visit <https://www.runreg.com/trot-for-tom> to sign-up and learn more.

Transfer Station permit price increase

HAMPDEN - In response to increased costs, the Hampden Selectmen voted on May 13 to increase the price of the Transfer Station permits.

The increase will be starting May 20.

For Seniors over 65 the price will be \$30 for the first permit and \$15 for any additional permits for those residents meeting those criteria and car registered to that person or person.

For those residents that are under 65 the cost is \$70 for the first permit and \$35 for any additional permits for those residents meeting the criteria.

Hampden Board of Health and Selectmen

Put Our Team To Work For You. 4 Local Offices - Global Network

FREE SELLER AND BUYER E-GUIDES

These guides provide valuable information to help you start the buying and/or seller process.

For your guide - email: sarahsupport@landmarkre.com

Ready for an in person consultation? Call any agent listed below for a Free, no obligation consultation.

CALL US FOR DETAILS ON ANY OF THESE PROPERTIES

SINGLE FAMILY LISTINGS			
STATUS	ADDRESS	DESCRIPTION	LIST PRICE
NEW	25 Bourne St., Palmer	2 room, 0 bed, 1f, 0h bath Other	\$155,000
ACT	35 Clement St., Springfield: East Forest Park	7 room, 3 bed, 1f, 1h bath Colonial	\$294,900
ACT	465 Roosevelt Ave., Springfield	7 room, 3 bed, 1f, 1h bath Colonial	\$384,900
ACT	119 E. Gooseberry Rd., West Springfield	6 room, 3 bed, 1f, 0h bath Ranch	\$339,900
CTG	32 Lincoln Rd., Longmeadow	8 room, 3 bed, 2f, 0h bath Colonial	\$389,900
CTG	214 Parkview St., Springfield	5 room, 3 bed, 1f, 0h bath Bungalow	\$299,900
UAG	184 Parkview Dr., Agawam	6 room, 3 bed, 2f, 0h bath Ranch	\$389,900
UAG	69 Westernview Cir., East Longmeadow	7 room, 3 bed, 2f, 0h bath Cape	\$339,500
UAG	79 E Akard St., Ludlow	8 room, 4 bed, 2f, 1h bath Colonial	\$459,900
UAG	100 Rowland St., Springfield	5 room, 3 bed, 1f, 0h bath Ranch	\$260,000
UAG	117 St. James Blvd., Springfield	6 room, 4 bed, 1f, 1h bath Cape	\$264,900
UAG	271 Bolton St., Springfield: Sixteen Acres	6 room, 3 bed, 2f, 0h bath Ranch	\$319,900
UAG	768 Stony Hill Rd., Wilbraham	7 room, 4 bed, 1f, 1h bath Colonial	\$284,000
CONDOMINIUM LISTINGS			
UAG	98 Tall Pines Rd U:98, Hampden	6 room, 2 bed, 2f, 0h bath Garden	\$399,900
UAG	315 Blisswood Village Dr., U:315, Ludlow	5 room, 2 bed, 1f, 1h bath Townhouse	\$239,900
UAG	235 State Street U:213, Springfield	4 room, 2 bed, 1f, 0h bath Garden	\$229,000
MULTI FAMILY LISTINGS			
UAG	15 Elm St. Monson	2 unit, 13 rooms, 6 bedrooms 2 Family - 2 Units Side by Side	\$329,900
UAG	4042-4044 Pine St., Palmer	2 unit, 11 rooms, 6 bedrooms 2 Family - 2 Units Side by Side	\$368,000
COMMERCIAL LISTINGS			
ACT	25 Bourne St, Palmer: Three Rivers	Commercial Building	\$155,000

Search LandmarkRE.com For All Listings In Western MA



WE'RE LOCAL WE'RE GLOBAL

CAREER IN REAL ESTATE? Call Us or Visit [Landmark RE.com](http://LandmarkRE.com) and Click on Careers HIRING ASSOCIATES FOR OFFICES IN: Wilbraham, E. Longmeadow, Monson, and Springfield

AGENT OF THE MONTH!



Dot Lortie 478-1940



Dawn Rodgers 478-2605



Maria D'Angelantonio 575-2898



Eileen O'Sullivan 505-9244



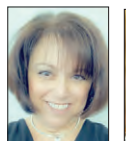
John Moltenbrey 427-5176



Tom Avezzie 218-7991



Nick Ferrara 386-4523



Luci Giguere 575-2837



Ann Paquette 626-6871



Kathy Esser 348-3803



Sue Rheame 478-0671



Dot Lortie 478-1940



Zoe Czaplicki 519-9224



Linda Alston 246-8616



Steve Lortie 427-4122



Kathi Calabrese 374-5867



Shari Lokey 218-8811



Ann Marie Martin 206-1161



Sandy Wegrzyn 519-1056



Art Ferrara 348-5827



Alyssa Rhodes 896-9269



Susan Raimor 374-3348

Easy Property Search at LandmarkRE.com

Follow us on facebook.com/LandmarkLortie and instagram.com/landmarkrealtorsma

Ask Us For A Highest Price Analysis On Your Home Relocation Across The Country or Around The World

Sales Positions Available - Licensing Course Market Leader -Serving Our Communities Since 1987

